

**PLANS FOR**  
**WASTEWATER TREATMENT FACILITY**  
**MODIFICATIONS AND IMPROVEMENTS**  
**FOR THE CITY OF**  
**BATESVILLE, ARKANSAS**  
**CONTRACT SECTION 3**  
**PRIMARY INTERCEPTOR SEWER IMPROVEMENTS**

**RLF PROJECT NO. WRD-003-620**  
**MWY PROJECT NO. BA138CS3**  
**JANUARY 2014**



AGENCY REVIEW SET  
AGENCY: AHD/ANRC/ADEQ  
ISSUE DATE: 5/13/14  
NOT FOR CONSTRUCTION

**JAMES C. ULMER**  
ARKANSAS REGISTERED PROFESSIONAL ENGINEER NO. 4691



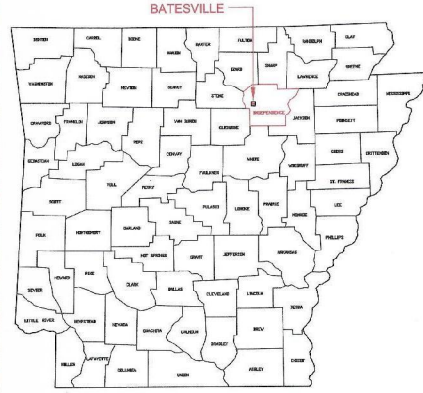
**CHRIS DOUGHERTY**  
ARKANSAS REGISTERED PROFESSIONAL ENGINEER NO. 14497



CITY OF BATESVILLE  
INDEPENDENCE COUNTY, ARKANSAS

**SHEET INDEX**

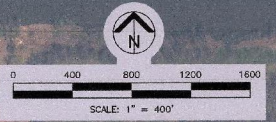
| SHEET NO.                              | DESCRIPTION                                  |
|--|--|
| G1                                     | TITLE SHEET                                  |
| G2                                     | SHEET INDEX AND VICINITY MAP                 |
| <b>SANITARY SEWER - SECTION 1</b>      |  |
| C1-1                                   | SECTION 1 PLAN AND PROFILE                   |
| C1-2                                   | TIE-IN 1A, 1B, 1D PLAN AND PROFILE           |
| C1-3                                   | TIE-IN 1C, 1E PLAN AND PROFILE               |
| C1-4                                   | SECTION 1 AND TIE-IN 1F PLAN AND PROFILE     |
| C1-5                                   | SECTION 1 PLAN AND PROFILE                   |
| C1-6                                   | TIE-IN 1G PLAN AND PROFILE                   |
| C1-7                                   | TIE-IN 1H, 1I PLAN AND PROFILE               |
| C1-8                                   | SECTION 1 AND TIE-IN 1J PLAN AND PROFILE     |
| C1-9                                   | SECTION 1 AND TIE-IN 1K, 1L PLAN AND PROFILE |
| <b>SANITARY SEWER - SECTION 2</b>      |  |
| C2-1                                   | SECTION 2 PLAN AND PROFILE                   |
| C2-2                                   | TIE-IN 2A, 2B, 2C, 2D PLAN AND PROFILE       |
| C2-3                                   | SECTION 2 AND TIE-IN 2E PLAN AND PROFILE     |
| C2-4                                   | SECTION 2 PLAN AND PROFILE                   |
| C2-5                                   | SECTION 2 PLAN AND PROFILE                   |
| <b>SANITARY SEWER - SECTION 3</b>      |  |
| C3-1                                   | SECTION 3 PLAN AND PROFILE                   |
| C3-2                                   | SECTION 3 PLAN AND PROFILE                   |
| C3-3                                   | TIE-IN 3A, 3B, 3C, 3D PLAN AND PROFILE       |
| C3-4                                   | SECTION 3 AND TIE-IN 3E PLAN AND PROFILE     |
| <b>SANITARY SEWER - SECTION 4</b>      |  |
| C4-1                                   | SECTION 4 PLAN AND PROFILE                   |
| C4-2                                   | SECTION 4 PLAN AND PROFILE                   |
| C4-3                                   | SECTION 4 PLAN AND PROFILE                   |
| C4-4                                   | SECTION 4 AND TIE-IN 4A PLAN AND PROFILE     |
| <b>ABANDON EXISTING SANITARY SEWER</b> |  |
| C5                                     | ABANDON EXISTING SANITARY SEWER              |
| C6                                     | ABANDON EXISTING SANITARY SEWER              |
| <b>SANITARY SEWER DETAILS</b>          |  |
| D1                                     | SANITARY SEWER DETAILS                       |
| D2                                     | SANITARY SEWER DETAILS                       |
| D3                                     | SANITARY SEWER DETAILS                       |



STATE OF ARKANSAS



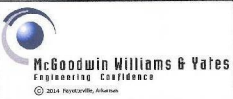
THE LOCATIONS OF EXISTING UNDERGROUND UTILITIES SHOWN ARE APPROXIMATE BASED ON THE BEST INFORMATION AVAILABLE AND MAY NOT REFLECT ALL EXISTING UTILITIES IN THE PROJECT AREA. THE CONTRACTOR IS RESPONSIBLE FOR COORDINATING WITH THE UTILITY COMPANIES FOR LOCATING EXISTING UTILITIES PRIOR TO CONSTRUCTION AND FOR PROTECTION OF SERVICES DURING CONSTRUCTION.



| REV | DATE | BY | DESCRIPTION |
|-----|------|----|-------------|
|     |      |    |             |
|     |      |    |             |
|     |      |    |             |



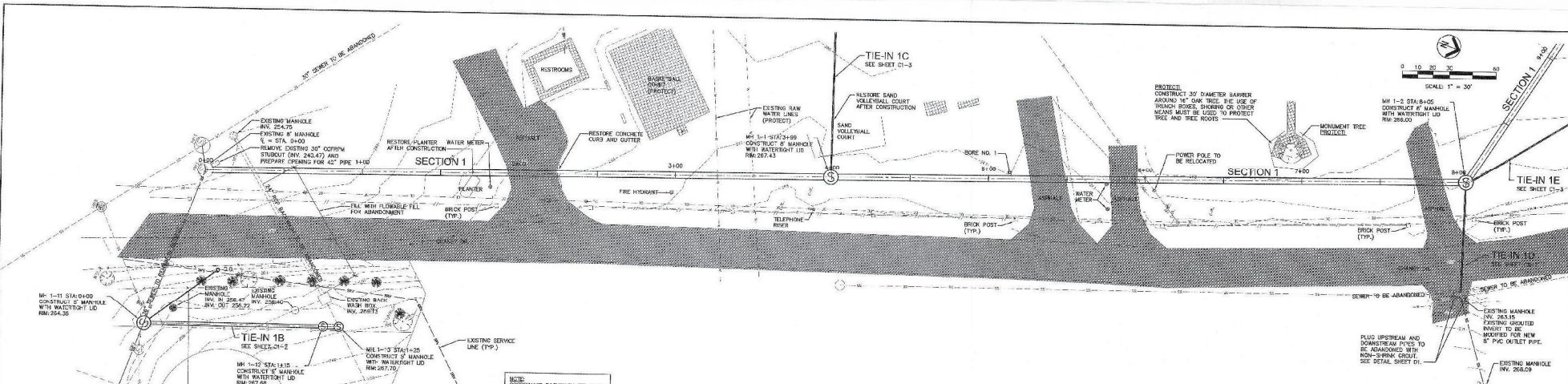
DESIGNED: CBD  
DRAWN: ELH  
CHECKED: RJC  
PLANS NO.: BA138CS3



WASTEWATER TREATMENT FACILITY MODIFICATIONS AND IMPROVEMENTS  
CONTRACT SECTION 3 - PRIMARY INTERCEPTOR SEWER IMPROVEMENTS  
BATESVILLE, ARKANSAS

**SHEET INDEX AND VICINITY MAP**

STRUCTURE NO. \_\_\_\_\_  
SHEET NO. **G2**



**LEGEND**

- EXISTING CONCRETE
- EXISTING ASPHALT
- EXISTING GRAVEL
- 1' CONTOURS
- SANITARY SEWER TO BE ABANDONED
- SANITARY SEWER SERVICE LINE
- SANITARY SEWER TO REMAIN IN SERVICE
- OVERHEAD ELECTRIC
- UNDERGROUND ELECTRIC
- UNDERGROUND TELEPHONE
- GAS LINE
- FIBER OPTIC LINE
- WATER LINE
- RIGHT-OF-WAY
- DITCH FLOW LINE
- RAIL FENCE
- CHAINLINK FENCE
- BARBED WIRE FENCE
- BOARD FENCE
- EXISTING FIRE HYDRANT
- EXISTING WATER METER
- EXISTING POWER POLE
- EXISTING DOWN GULLY
- EXISTING MANHOLE

**GENERAL CONSIDERATIONS:**

- CAUTION IN ALL AREAS OF POTENTIAL POWER LINES. ALL OVERHEAD POWER LINES MAY NOT BE SHOWN ON THESE PLANS.
- THE LOCATION OF ALL EXISTING UTILITIES SHOWN ON THESE PLANS IS APPROXIMATE AND SHALL BE FIELD VERIFIED. UTILITIES SHOWN IN PROFILE VIEWS ARE SHOWN AT TYPICAL DEPTHS UNLESS NOTED OTHERWISE.
- ALL NEW SEWER SERVICES TO BE CONSTRUCTED PER THE ARKANSAS PLUMBING CODE, LATEST EDITION.

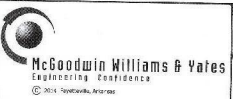
THE LOCATIONS OF EXISTING UNDERGROUND UTILITIES SHOWN ARE APPROXIMATE BASED ON THE BEST INFORMATION AVAILABLE AND THE CONTRACTOR IS RESPONSIBLE FOR CORROBORATING WITH THE UTILITY COMPANIES FOR LOCATING EXISTING UTILITIES PRIOR TO CONSTRUCTION AND FOR PROTECTION OF SERVICES DURING CONSTRUCTION.



| REV | DATE | BY | DESCRIPTION |
|-----|------|----|-------------|
|     |      |    |             |



DESIGNED: **ELH**  
 DRAWN: **RC**  
 PLANS NO: **BA138CS3**



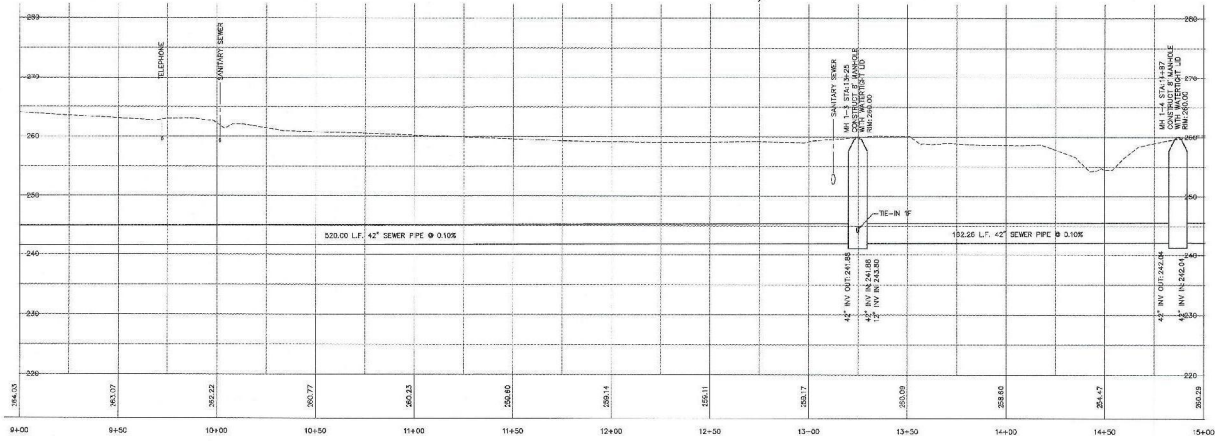
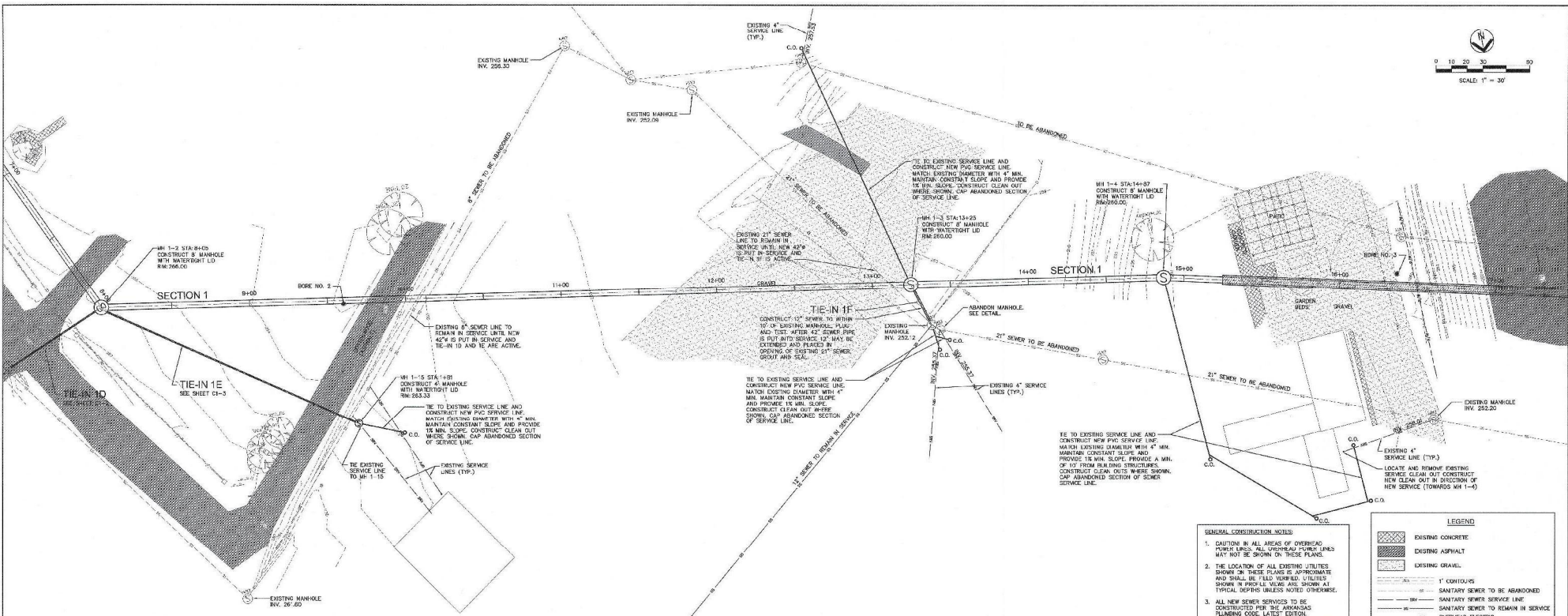
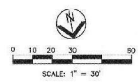
WASTEWATER TREATMENT FACILITY MODIFICATIONS AND IMPROVEMENTS  
 CONTRACT SECTION 3 - PRIMARY INTERCEPTOR SEWER IMPROVEMENTS  
 BATESVILLE, ARKANSAS

**SANITARY SEWER SECTION 1 PLAN AND PROFILE**

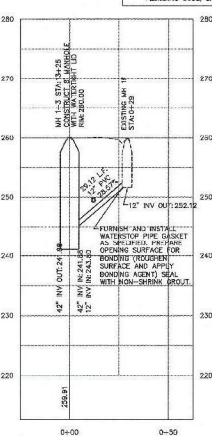
STRUCTURE NO: **C1-1**







SECTION 1 - PROFILE  
HORIZ: 1"=30' VERT: 1"=10'



TIE-IN 1F - PROFILE  
HORIZ: 1"=30' VERT: 1"=10'

- GENERAL CONSTRUCTION NOTES:**
- CAUTION IN ALL AREAS OF OVERHEAD POWER LINES. ALL OVERHEAD POWER LINES MUST NOT BE SHOWN ON THESE PLANS.
  - THE LOCATION OF ALL EXISTING UTILITIES SHOWN IN THESE PLANS IS APPROXIMATE AND SHALL BE FIELD VERIFIED. UTILITIES SHOWN IN PROFILE PLANS ARE SHOWN AT TYPICAL DEPTHS UNLESS NOTED OTHERWISE.
  - ALL NEW SEWER SERVICES TO BE CONSTRUCTED PER THE ARKANSAS PLUMBING CODE, LATEST EDITION.

**LEGEND**

|  |                                     |
|--|-------------------------------------|
|  | EXISTING CONCRETE                   |
|  | EXISTING ASPHALT                    |
|  | EXISTING GRAVEL                     |
|  | 1" CONTOURS                         |
|  | SANITARY SEWER TO BE ABANDONED      |
|  | SANITARY SEWER SERVICE LINE         |
|  | SANITARY SEWER TO REMAIN IN SERVICE |
|  | OVERHEAD ELECTRIC                   |
|  | UNDERGROUND ELECTRIC                |
|  | UNDERGROUND TELEPHONE               |
|  | GAS LINE                            |
|  | FIBER OPTIC LINE                    |
|  | WATER LINE                          |
|  | RIGHT-OF-WAY                        |
|  | URBAN FLOW LINE                     |
|  | RAIL FENCE                          |
|  | CHAINING FENCE                      |
|  | BARBED WIRE FENCE                   |
|  | BOARD FENCE                         |
|  | EXISTING FIRE HYDRANT               |
|  | EXISTING WATER METER                |
|  | EXISTING POWER POLE                 |
|  | EXISTING DOWN GUY                   |
|  | EXISTING MANHOLE                    |

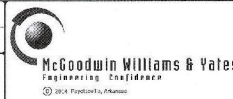
THE LOCATIONS OF EXISTING UNDERGROUND UTILITIES SHOWN ARE APPROXIMATE, BASED ON THE BEST INFORMATION AVAILABLE, AND MAY NOT REPRESENT ALL EXISTING UTILITIES IN THE PROJECT AREA. THE CONTRACTOR IS RESPONSIBLE FOR COORDINATING WITH THE UTILITY COMPANIES FOR LOCATING EXISTING UTILITIES PRIOR TO CONSTRUCTION AND FOR PROTECTION OF SERVICES DURING CONSTRUCTION.



| REV | DATE | BY | DESCRIPTION |
|-----|------|----|-------------|
|     |      |    |             |



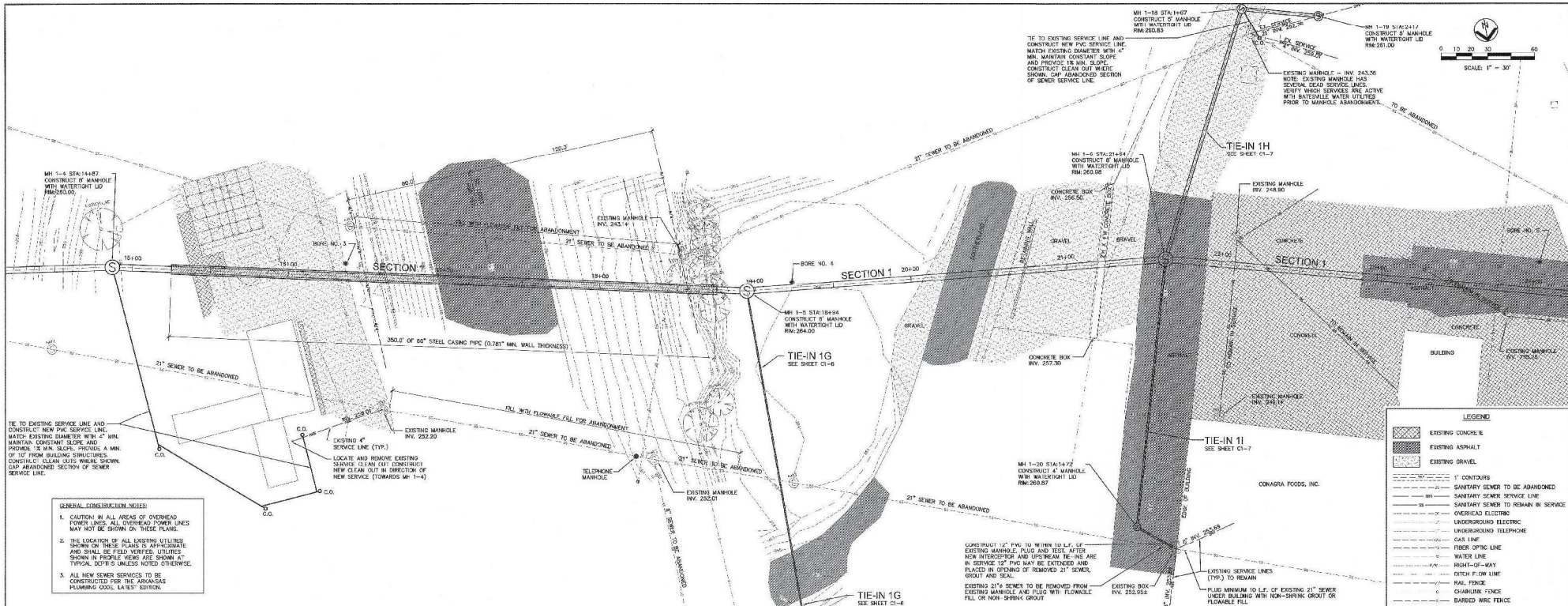
DESIGNED BY: ELH  
DRAWN BY: RJC  
PROJECT NO.: BA138CS3



WASTEWATER TREATMENT FACILITY MODIFICATIONS AND IMPROVEMENTS  
CONTRACT SECTION 3 - PRIMARY INTERCEPTOR SEWER IMPROVEMENTS  
BATESVILLE, ARKANSAS

**SANITARY SEWER  
SECTION 1 AND TIE-IN 1F  
PLAN AND PROFILE**

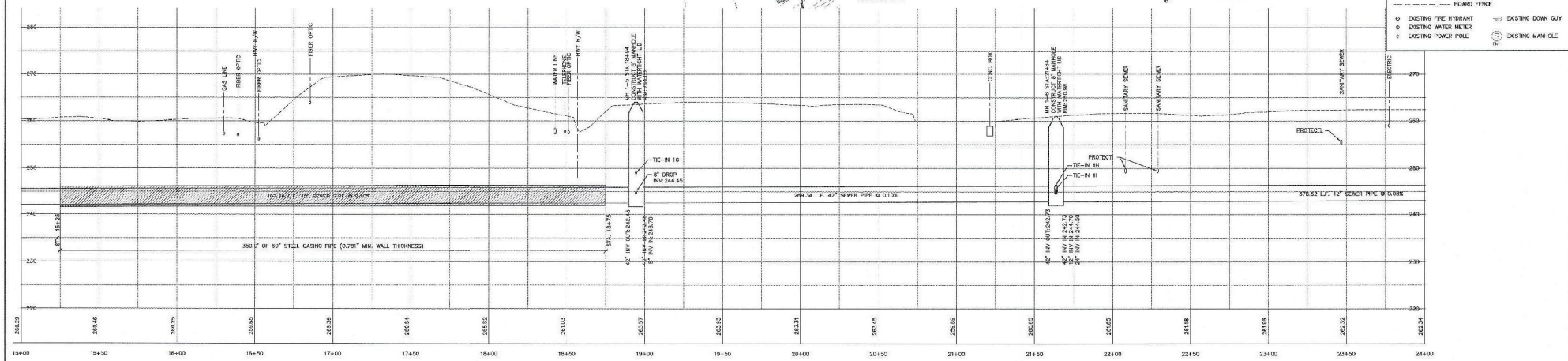
STRIP/SHEET NO.:  
SHEET NO.:  
**C1-4**



- GENERAL CONSTRUCTION NOTES:**
- CAUTION IN ALL AREAS OF OVERHEAD POWER LINES. ALL OVERHEAD POWER LINES MAY NOT BE SHOWN ON THESE PLANS.
  - THE LOCATION OF ALL EXISTING UTILITIES SHOWN ON THESE PLANS IS APPROXIMATE AND SHALL BE FIELD VERIFIED. UTILITIES SHOWN IN PROFILE VIEWS ARE SHOWN AT TYPICAL DEPT'S UNLESS NOTED OTHERWISE.
  - ALL NEW SEWER SERVICES TO BE CONSTRUCTED PER THE ARKANSAS PLUMBING CODE, LATEST EDITION.

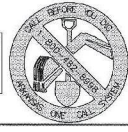
**LEGEND**

- EXISTING CONCRETE
- EXISTING ASPHALT
- EXISTING GRAVEL
- 1' CONTOURS
- SANITARY SEWER TO BE ABANDONED
- SANITARY SEWER SERVICE LINE
- SANITARY SEWER TO REMAIN IN SERVICE
- OVERHEAD ELECTRIC
- UNDERGROUND ELECTRIC
- UNDERGROUND TELEPHONE
- GAS LINE
- FIBER OPTIC LINE
- WATER LINE
- RIGHT-OF-WAY
- DITCH FLOW LINE
- RAIL FENCE
- CHAINS FENCE
- BARBED WIRE FENCE
- BOARD FENCE
- EXISTING FIRE HYDRANT
- EXISTING WATER METER
- EXISTING POWER POLE
- EXISTING DOWN GUY
- EXISTING MANHOLE



**SECTION 1 - PROFILE**  
HORIZ: 1"=30' VERT: 1"=10'

THE LOCATIONS OF EXISTING UNDERGROUND UTILITIES SHOWN ARE APPROXIMATE BASED ON THE BEST INFORMATION AVAILABLE AND MAY NOT REFLECT ALL EXISTING UTILITIES IN THE PROJECT AREA. THE CONTRACTOR IS RESPONSIBLE FOR COORDINATING WITH THE UTILITY COMPANIES FOR LOCATING EXISTING UTILITIES PRIOR TO CONSTRUCTION AND FOR PROTECTION OF SERVICES DURING CONSTRUCTION.



| REV | DATE | BY | DESCRIPTION |
|-----|------|----|-------------|
|     |      |    |             |



X32268    DRAWN    ELH  
 CHECKED    RC  
 PLANS NO.    BA138CS3  
**McGoodwin Williams & Yates**  
 Engineering Consultants  
 3124 First Street, Arkansas

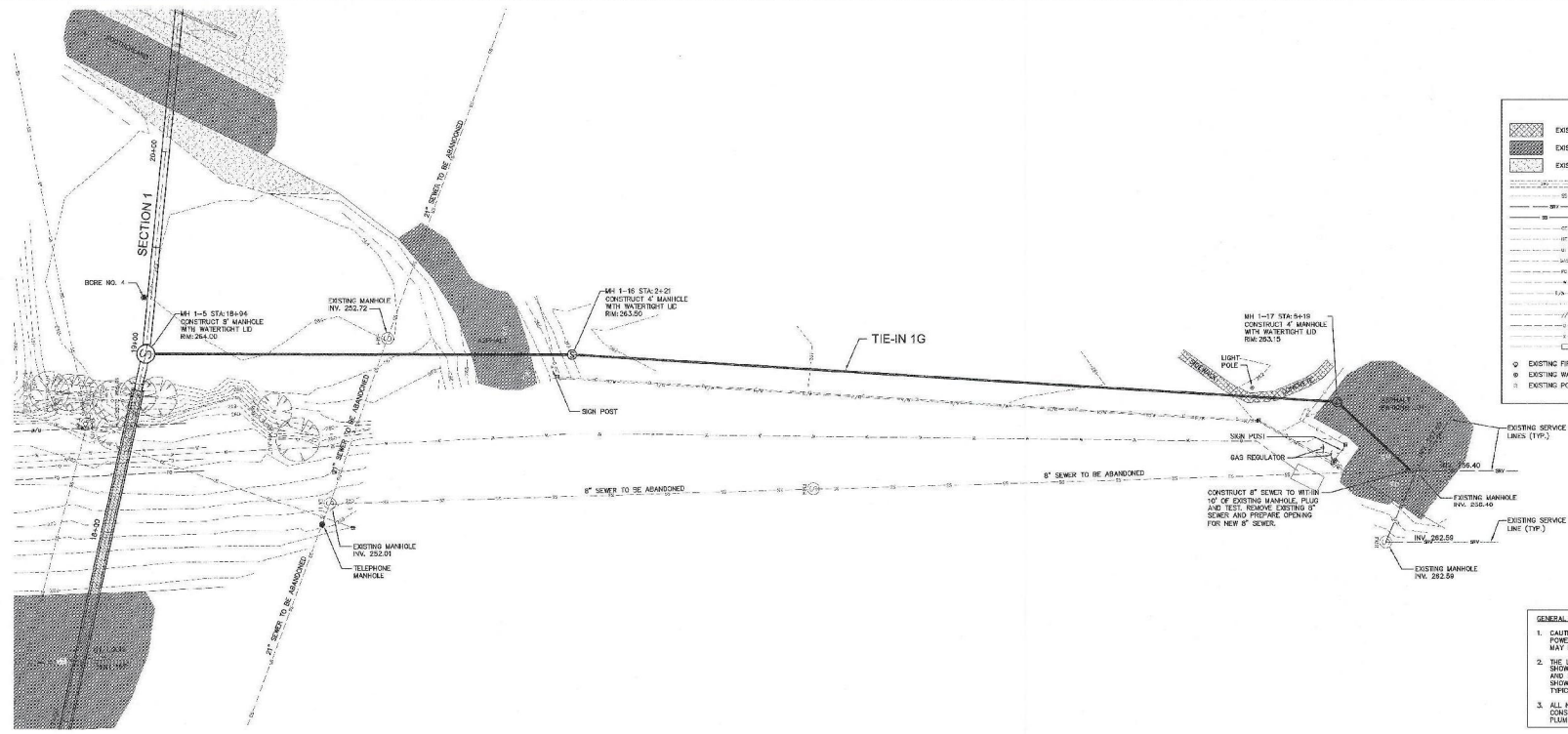
WASTEWATER TREATMENT FACILITY MODIFICATIONS AND IMPROVEMENTS  
 CONTRACT SECTION 3 - PRIMARY INTERCEPTOR SEWER IMPROVEMENTS  
 BATESVILLE, ARKANSAS  
**SANITARY SEWER SECTION 1 PLAN AND PROFILE**  
 SHEET NO.    C1-5

X:\BATESVILLE\WASTEWATER TREATMENT FACILITY MODIFICATIONS AND IMPROVEMENTS\CONTRACT SECTION 3 - PRIMARY INTERCEPTOR SEWER IMPROVEMENTS\BA138CS3.DWG, DATE: 04/24/2018, 9:11:10 AM, USER: PCHOPIN, ANSOLO, 1:1

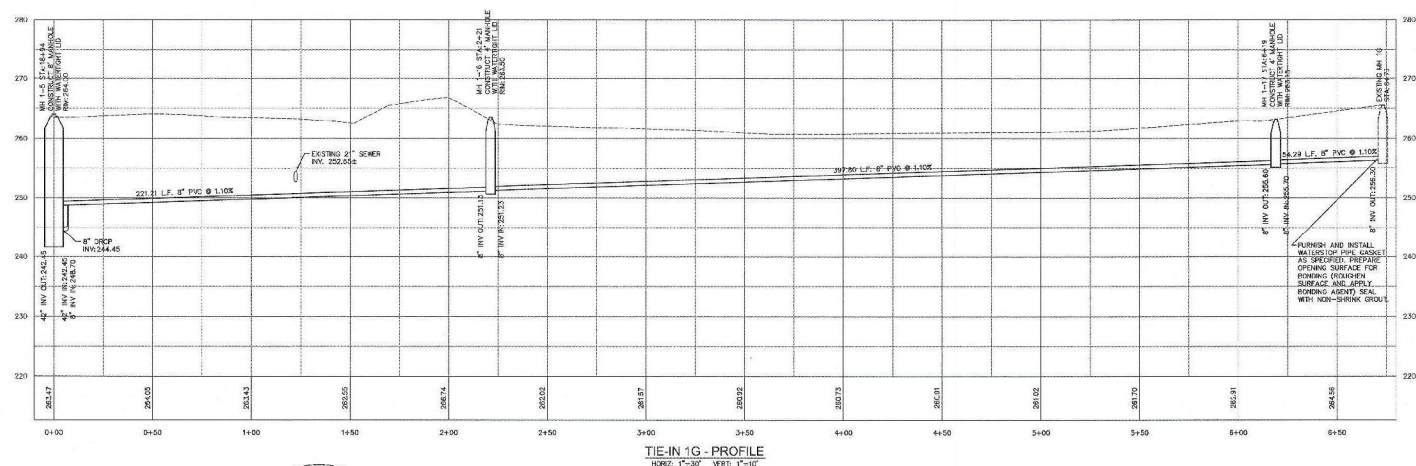


**LEGEND**

|  |                                     |
|--|-------------------------------------|
|  | EXISTING CONCRETE                   |
|  | EXISTING ASPHALT                    |
|  | EXISTING GRAVEL                     |
|  | 1' GROUNDLINE                       |
|  | SANITARY SEWER TO BE ABANDONED      |
|  | SANITARY SEWER SERVICE LINE         |
|  | SANITARY SEWER TO REMAIN IN SERVICE |
|  | OVERHEAD ELECTRIC                   |
|  | UNDERGROUND ELECTRIC                |
|  | UNDERGROUND TELEPHONE               |
|  | GAS LINE                            |
|  | FIBER OPTIC LINE                    |
|  | WATER LINE                          |
|  | RIGHT-OF-WAY                        |
|  | DITCH FLOW LINE                     |
|  | RAIL FENCE                          |
|  | CHAINLINK FENCE                     |
|  | BARRIED WIRE FENCE                  |
|  | ROADWAY FENCE                       |
|  | EXISTING FIRE HYDRANT               |
|  | EXISTING WATER METER                |
|  | EXISTING POWER POLE                 |
|  | EXISTING DOWN CUP                   |
|  | EXISTING MANHOLE                    |
|  | EXISTING SERVICE LINE (TYP.)        |



- GENERAL CONSTRUCTION NOTES**
1. CAUTION IN ALL AREAS OF OVERHEAD POWER LINES. ALL OVERHEAD POWER LINES MUST NOT BE SHOWN ON THESE PLANS.
  2. THE LOCATION OF ALL EXISTING UTILITIES SHOWN ON THESE PLANS IS APPROXIMATE AND SHALL BE FIELD LOCATED UTILITIES SHOWN IN PROFILE VIEWS ARE SHOWN AT TYPICAL SPACES UNLESS NOTED OTHERWISE.
  3. ALL NEW SEWER SERVICES TO BE CONSTRUCTED PER THE ARKANSAS PLUMBING CODE, LATEST EDITION.



THE LOCATIONS OF EXISTING UNDERGROUND UTILITIES SHOWN ARE APPROXIMATE, BASED ON THE BEST INFORMATION AVAILABLE AND MAY NOT REFLECT ALL EXISTING UTILITIES IN THE PROJECT AREA. THE CONTRACTOR IS RESPONSIBLE FOR COORDINATING WITH THE UTILITY COMPANIES FOR LOCATING EXISTING UTILITIES PRIOR TO CONSTRUCTION AND FOR PROTECTION OF SERVICES DURING CONSTRUCTION.



| REV | DATE | BY | DESCRIPTION |
|-----|------|----|-------------|
|     |      |    |             |
|     |      |    |             |

DESIGNED: CBD  
 DRAWN: ELH  
 CHECKED: RC  
 PLANS NO: BA138CS3

**McGoodwin Williams & Yates**  
 Engineering Consultants  
 2614 Northside Avenue

WASTEWATER TREATMENT FACILITY MODIFICATIONS AND IMPROVEMENTS  
 CONTRACT SECTION 3 - PRIMARY INTERCEPTOR SEWER IMPROVEMENTS  
 BATESVILLE, ARKANSAS

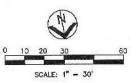
**SANITARY SEWER  
 TIE-IN 1G  
 PLAN AND PROFILE**

STRUCTURE NO. C1-6

2024/06/24 10:52:10 AM C:\Users\chad.doughty\OneDrive\Documents\138CS3\BECT1.dwg, C:\Users\chad.doughty\OneDrive\Documents\138CS3\BECT1.dwg



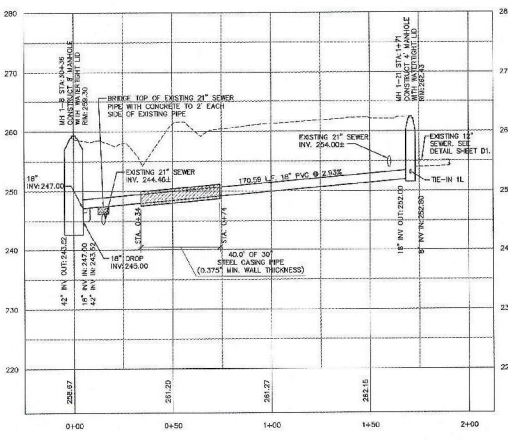
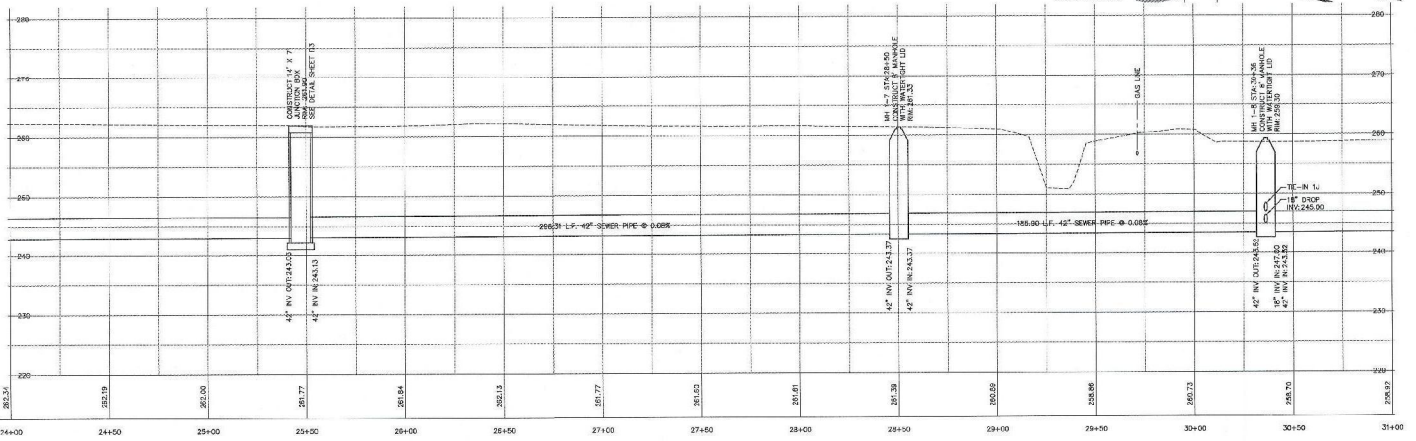
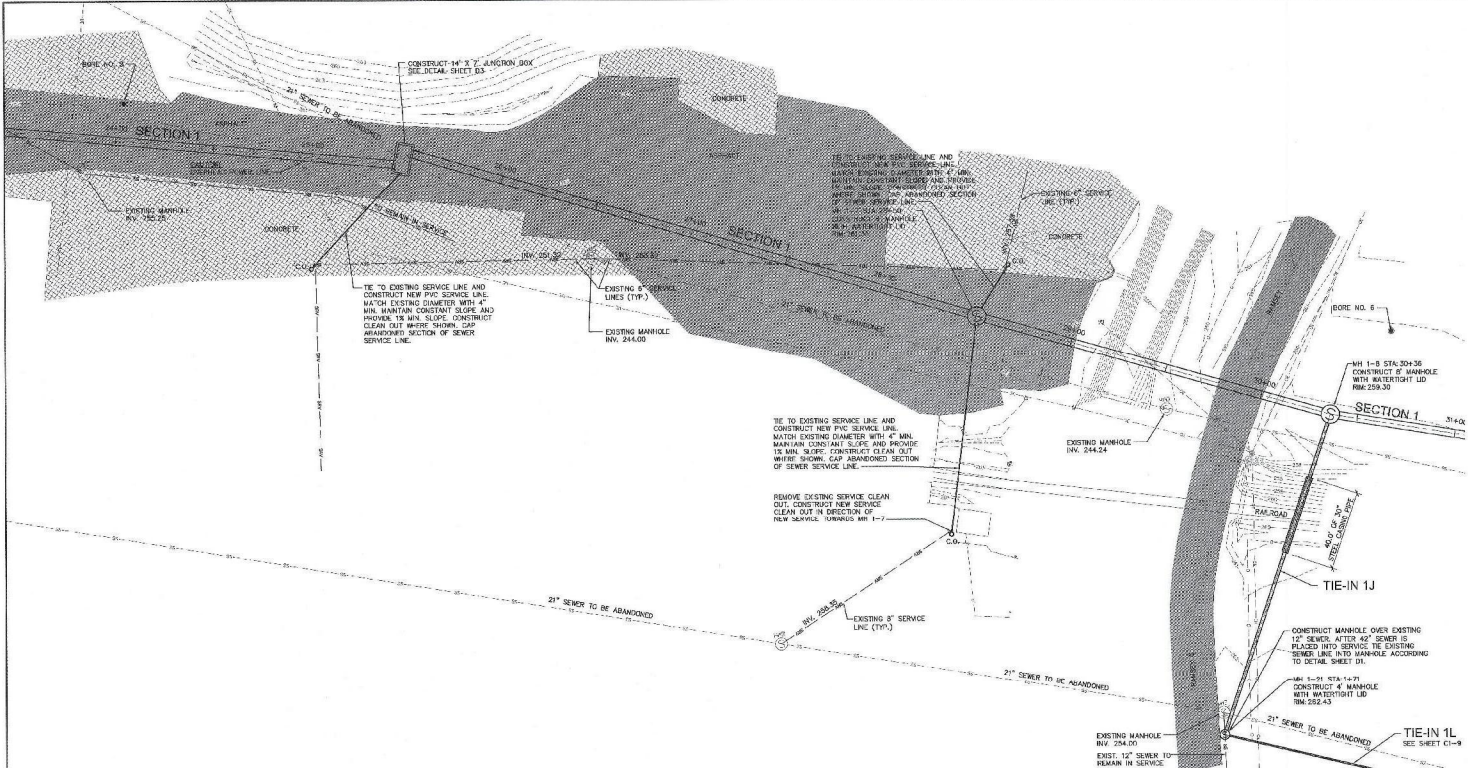




**LEGEND**

|  |                                     |
|--|-------------------------------------|
|  | EXISTING CONCRETE                   |
|  | EXISTING ASPHALT                    |
|  | EXISTING GRAVEL                     |
|  | 1" CONTOUR                          |
|  | SANITARY SEWER TO BE ABANDONED      |
|  | SANITARY SEWER SERVICE LINE         |
|  | SANITARY SEWER TO REMAIN IN SERVICE |
|  | OVERHEAD ELECTRIC                   |
|  | UNDERGROUND ELECTRIC                |
|  | UNDERGROUND TELEPHONE               |
|  | GAS LINE                            |
|  | FIBER OPTIC LINE                    |
|  | RIGHT-OF-WAY                        |
|  | DITCH FENCE                         |
|  | RAIL FENCE                          |
|  | CHAINLINK FENCE                     |
|  | BARBED WIRE FENCE                   |
|  | HOUND FENCE                         |
|  | EXISTING FIRE HYDRANT               |
|  | EXISTING WATER METER                |
|  | EXISTING POWER POLE                 |
|  | EXISTING DOWN CAY                   |
|  | EXISTING MANHOLE                    |

- GENERAL CONSTRUCTION NOTES**
- CAUTION IN ALL AREAS OF OVERHEAD POWER LINES. ALL OVERHEAD POWER LINES MAY NOT BE SHOWN ON THESE PLANS.
  - THE LOCATION OF ALL EXISTING UTILITIES SHOWN ON THESE PLANS IS APPROXIMATE AND SHALL BE FIELD VERIFIED. UTILITIES SHOWN IN PROFILES MUST BE SHOWN AT PHYSICAL DEPTHS UNLESS NOTED OTHERWISE.
  - ALL NEW SEWER SERVICES TO BE CONSTRUCTED PER THE ARKANSAS PLUMBING CODE, LATEST EDITION.



THE LOCATIONS OF EXISTING UNDERGROUND UTILITIES SHOWN ARE APPROXIMATE BASED ON THE BEST INFORMATION AVAILABLE AND MAY NOT REFLECT ALL EXISTING UTILITIES IN THE PROJECT AREA. THE CONTRACTOR IS RESPONSIBLE FOR CORROBORATING WITH THE UTILITY COMPANIES FOR LOCATING EXISTING UTILITIES PRIOR TO CONSTRUCTION AND FOR PROTECTION OF SERVICES DURING CONSTRUCTION.



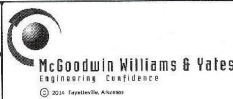
| REV | DATE | BY | DESCRIPTION |
|-----|------|----|-------------|
|     |      |    |             |
|     |      |    |             |



DESIGNED  
CBD

DRAWN  
ELH

PROJECT NO.  
BA138CS3



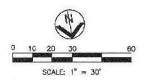
WASTEWATER TREATMENT FACILITY MODIFICATIONS AND IMPROVEMENTS  
CONTRACT SECTION 3 - PRIMARY INTERCEPTOR SEWER IMPROVEMENTS  
BATESVILLE, ARKANSAS

**SANITARY SEWER  
SECTION 1 AND TIE-IN 1J  
PLAN AND PROFILE**

STRUCTURE NO.  
C1-8

SHEET NO.  
C1-8

X:\2018\138CS3\138CS3.DWG, CT, 11/15/2018 10:22:58 AM, User: cadpaw, ARCHD 1/1

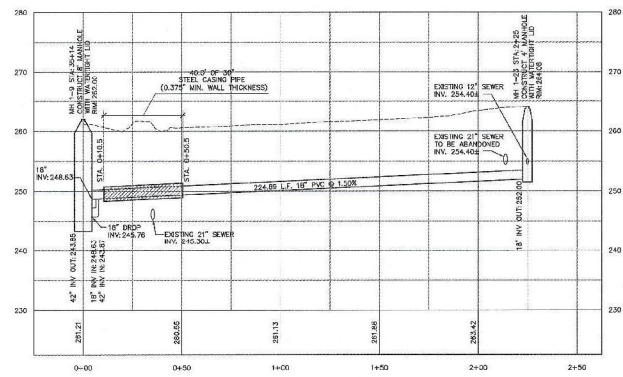
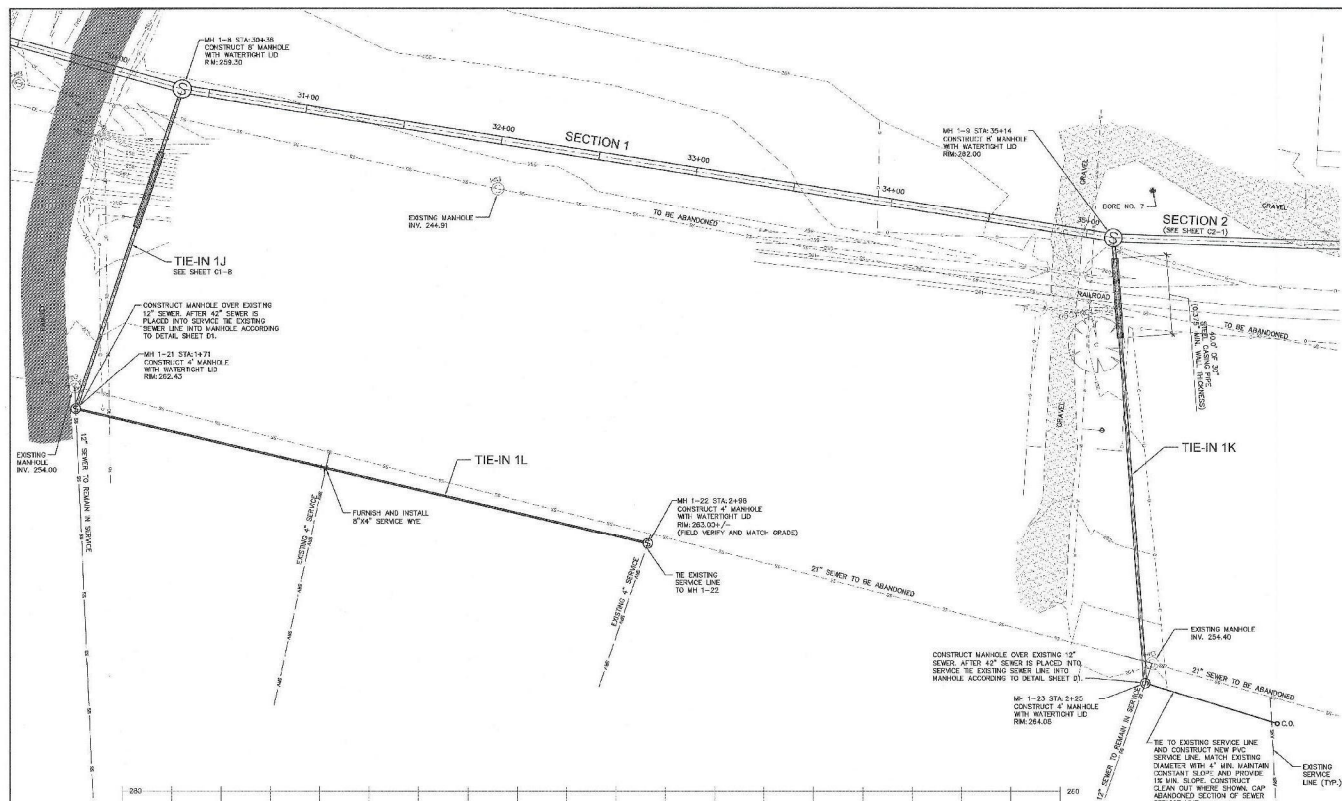


**LEGEND**

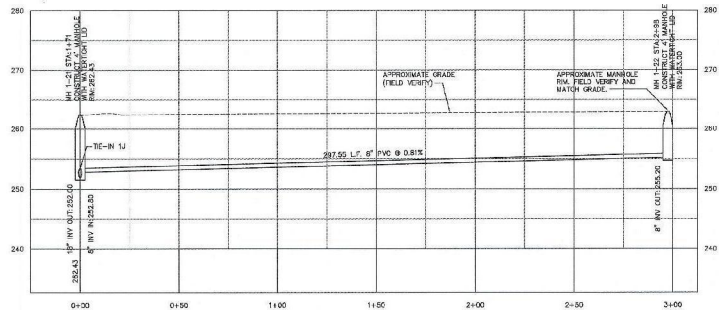
|  |                                     |
|--|-------------------------------------|
|  | EXISTING CONCRETE                   |
|  | EXISTING ASPHALT                    |
|  | EXISTING GRAVEL                     |
|  | 1' CONTOURS                         |
|  | SANITARY SEWER TO BE ABANDONED      |
|  | SANITARY SEWER SERVICE LINE         |
|  | SANITARY SEWER TO REMAIN IN SERVICE |
|  | OVER-HEAD ELECTRIC                  |
|  | UNDERGROUND ELECTRIC                |
|  | UNDERGROUND TELEPHONE               |
|  | GAS LINE                            |
|  | FIBER OPTIC LINE                    |
|  | WATER LINE                          |
|  | RIGHT-OF-WAY                        |
|  | DITCH FLOW LINE                     |
|  | RAIL FENCE                          |
|  | CHAINLINK FENCE                     |
|  | BARBED WIRE FENCE                   |
|  | BOARD FENCE                         |
|  | EXISTING FIRE HYDRANT               |
|  | EXISTING WATER METER                |
|  | EXISTING POWER POLE                 |
|  | EXISTING MANHOLE                    |

**GENERAL CONSTRUCTION NOTES:**

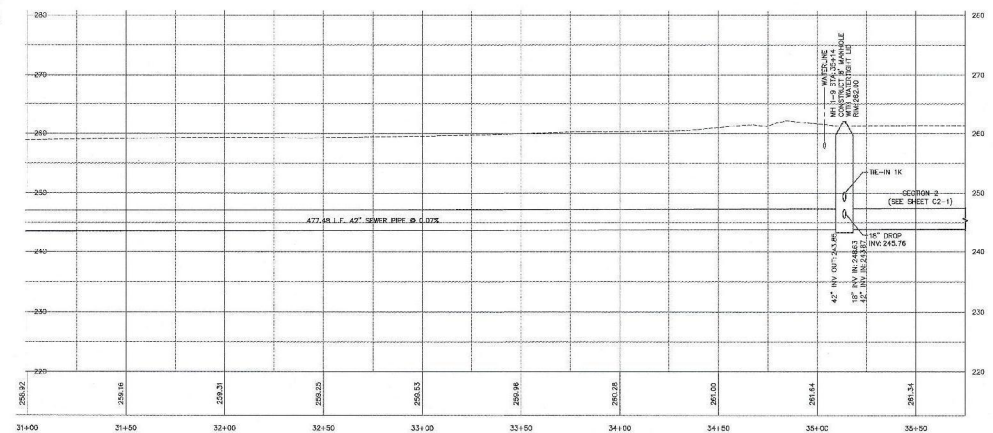
- CAUTION IN ALL AREAS OF OVER-HEAD POWER LINES. ALL OVER-HEAD POWER LINES MAY NOT BE SHOWN ON THESE PLANS.
- THE LOCATION OF ALL EXISTING UTILITIES SHOWN ON THESE PLANS IS APPROXIMATE AND SHALL BE FIELD VERIFIED UTILITIES SHOWN IN PROFILE VIEWS ARE SHOWN AT TYPICAL DEPTHS UNLESS NOTED OTHERWISE.
- ALL NEW SEWER SERVICES TO BE CONSTRUCTED PER THE ARKANSAS PLUMBING CODE, LATEST EDITION.



**TIE-IN 1K - PROFILE**  
HORIZ: 1"=30' VERT: 1"=12'



**TIE-IN 1L - PROFILE**  
HORIZ: 1"=30' VERT: 1"=12'



**SECTION 1 - PROFILE**  
HORIZ: 1"=30' VERT: 1"=12'

THE LOCATIONS OF EXISTING UNDERGROUND UTILITIES SHOWN ARE APPROXIMATE BASED ON THE BEST INFORMATION AVAILABLE AND MAY NOT REFLECT ALL EXISTING UTILITIES IN THE PROJECT AREA. THE CONTRACTOR IS RESPONSIBLE FOR COORDINATING WITH THE UTILITY COMPANIES FOR LOCATING EXISTING UTILITIES PRIOR TO CONSTRUCTION AND FOR PROTECTION OF SERVICES DURING CONSTRUCTION.



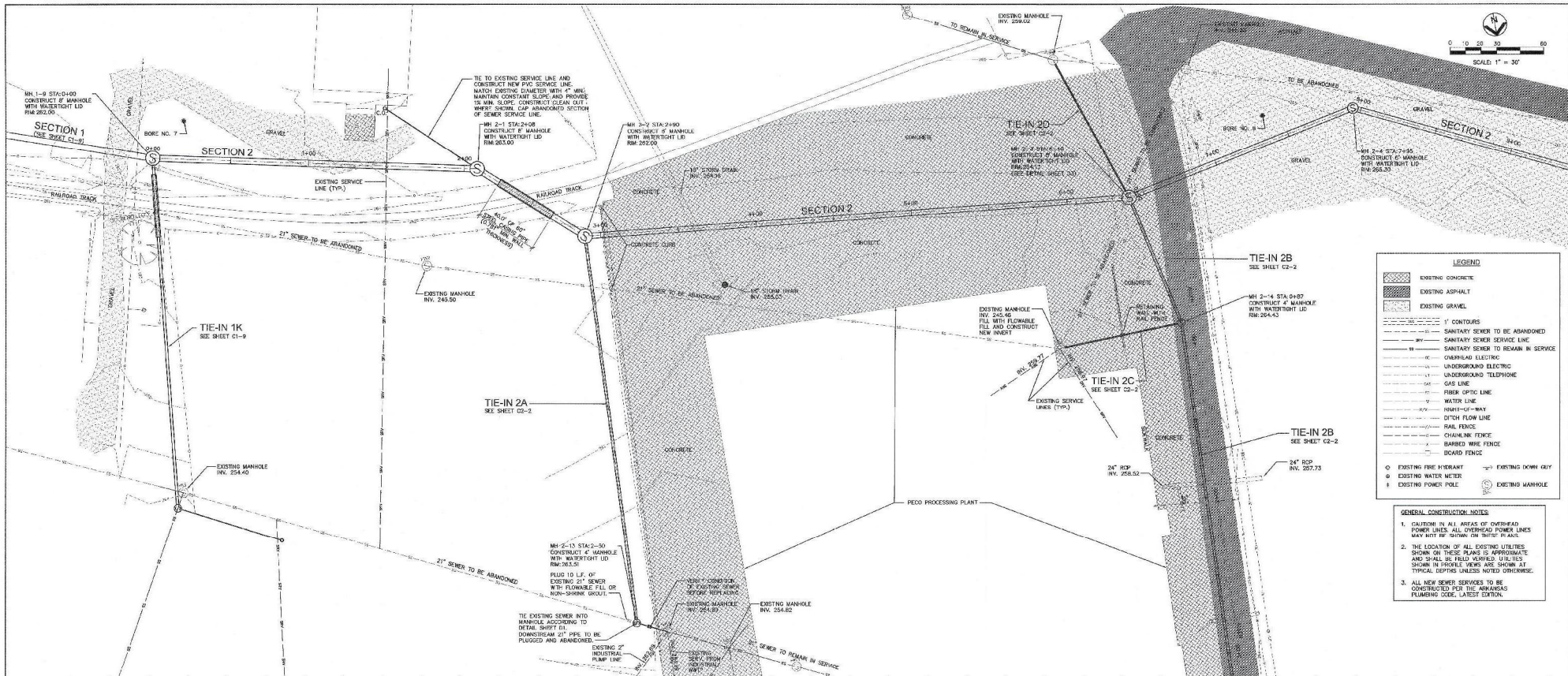
| REV | DATE | BY | DESCRIPTION |
|-----|------|----|-------------|
|     |      |    |             |
|     |      |    |             |
|     |      |    |             |



DESIGNED: CBH  
DRAWN: ELH  
CHECKED: RC  
PLANS NO.: BA138CS3



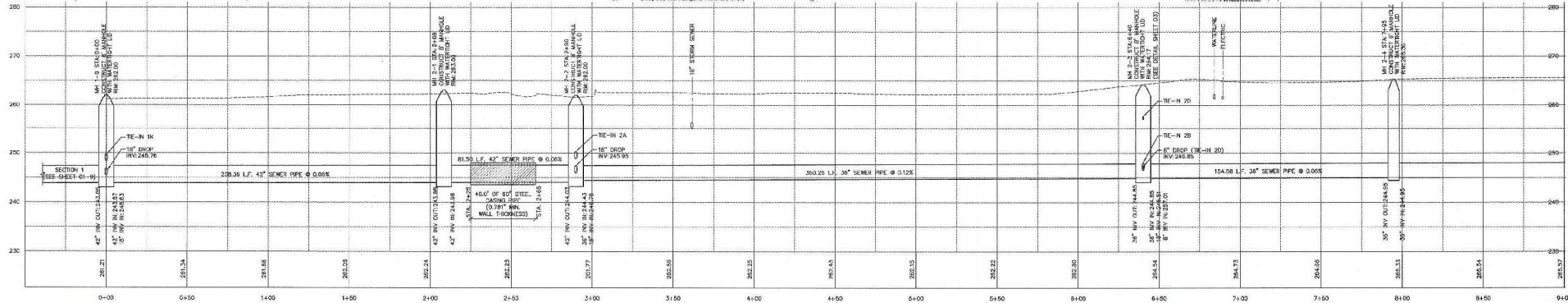
|   |                          |
|---|--------------------------|
| WASTEWATER TREATMENT FACILITY MODIFICATIONS AND IMPROVEMENTS<br>CONTRACT SECTION 3 - PRIMARY INTERCEPTOR SEWER IMPROVEMENTS<br>BATESVILLE, ARKANSAS | STRUCTURE NO.            |
| <b>SANITARY SEWER<br/>SECTION 1 AND TIE-IN 1K, 1L<br/>PLAN AND PROFILE</b>  | SHEET NO.<br><b>C1-9</b> |



**LEGEND**

|  |                                     |
|--|-------------------------------------|
|  | EXISTING CONCRETE                   |
|  | EXISTING ASPHALT                    |
|  | EXISTING GRAVEL                     |
|  | 1' CONTOUR                          |
|  | SANITARY SEWER TO BE ABANDONED      |
|  | SANITARY SEWER TO REMAIN IN SERVICE |
|  | OVERHEAD ELECTRIC                   |
|  | UNDERGROUND ELECTRIC                |
|  | UNDERGROUND TELEPHONE               |
|  | GAS LINE                            |
|  | FIBER OPTIC LINE                    |
|  | WATER LINE                          |
|  | FRONT-OF-WAY                        |
|  | DITCH FLOW LINE                     |
|  | RAIL FENCE                          |
|  | CHAIN-LINK FENCE                    |
|  | BARBED WIRE FENCE                   |
|  | BOARD FENCE                         |
|  | EXISTING FIRE HYDRANT               |
|  | EXISTING WATER METER                |
|  | EXISTING POWER POLE                 |
|  | EXISTING MANHOLE                    |

- GENERAL CONSTRUCTION NOTES**
- CAUTION IN ALL AREAS OF OVERHEAD POWER LINES. ALL OVERHEAD POWER LINES SHALL BE MARKED IN ACCORDANCE WITH THE NATIONAL ELECTRICAL SAFETY CODE.
  - THE LOCATION OF ALL EXISTING UTILITIES SHOWN ON THESE PLANS IS APPROXIMATE AND SHALL BE FIELD VERIFIED. UTILITIES SHOWN IN PROFILE VIEWS ARE SHOWN AT TYPICAL DEPTHS UNLESS NOTED OTHERWISE.
  - ALL NEW SEWER SERVICES TO BE CONSTRUCTED PER THE ARKANSAS PLUMBING CODE, LATEST EDITION.



**SECTION 2 - PROFILE**  
HORIZ: 1"=30' VERT: 1"=10'

THE LOCATIONS OF EXISTING UNDERGROUND UTILITIES SHOWN ARE APPROXIMATE, BASED ON THE BEST INFORMATION AVAILABLE AND MAY NOT REFLECT ALL EXISTING UTILITIES IN THE PROJECT AREA. THE CONTRACTOR IS RESPONSIBLE FOR COORDINATING WITH THE UTILITY COMPANIES FOR LOCATING EXISTING UTILITIES PRIOR TO CONSTRUCTION AND FOR PROTECTION OF SERVICES DURING CONSTRUCTION.



| REV | DATE | BY | DESCRIPTION |
|-----|------|----|-------------|
|     |      |    |             |



DESIGNED: CSD  
DRAWN: ELH  
CHECKED: RC  
PLANS NO.: BA138CS3

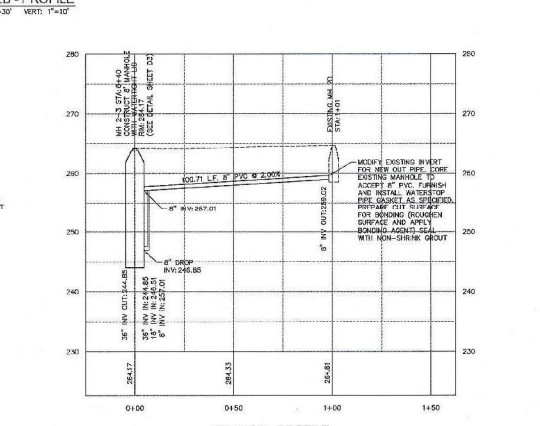
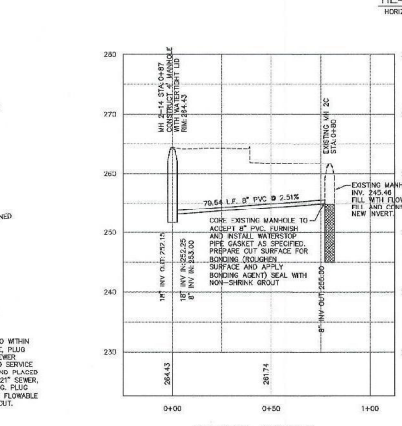
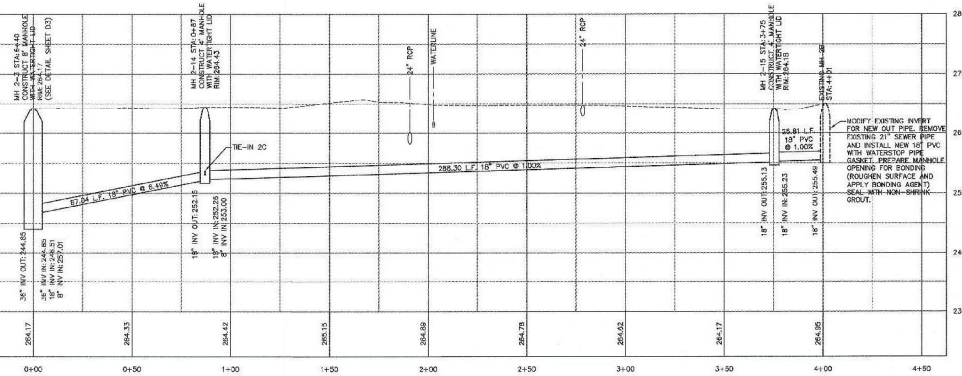
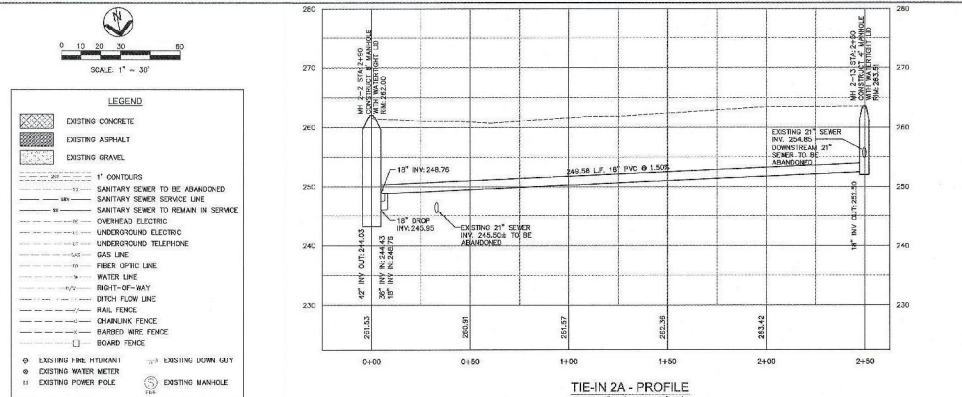
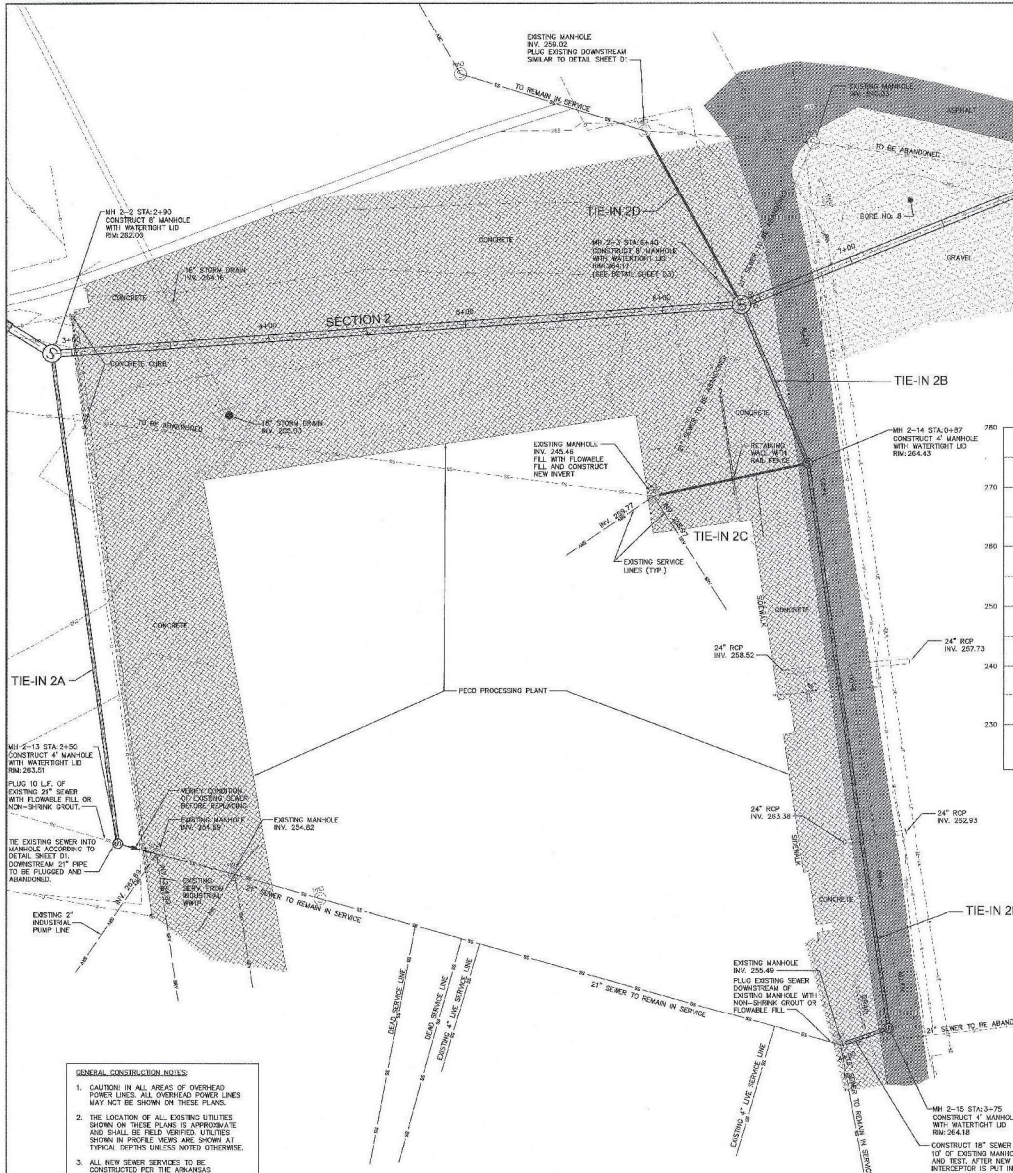


WASTEWATER TREATMENT FACILITY MODIFICATIONS AND IMPROVEMENTS  
CONTRACT SECTION 3 - PRIMARY INTERCEPTOR SEWER IMPROVEMENTS  
BATESVILLE, ARKANSAS

**SANITARY SEWER SECTION 2 PLAN AND PROFILE**

STRUCTURE NO.: C2-1

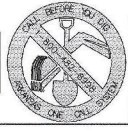
X:\BIBB\WATER\150252\DWG\DWG\SECTION 3\SECTION 2\SECTION 2 - PROFILE.dwg, 01/11/2011 10:09 AM, PLOT: 7/27/2011, 11:11



**GENERAL CONSTRUCTION NOTES**

1. CAUTION IN ALL AREAS OF OVERHEAD POWER LINES. ALL OVERHEAD POWER LINES MAY NOT BE SHOWN ON THESE PLANS.
2. THE LOCATION OF ALL EXISTING UTILITIES SHOWN ON THESE PLANS IS APPROXIMATE AND SHALL BE FIELD VERIFIED UTILITIES SHOWN IN PROFILE VIEWS ARE SHOWN AT TYPICAL OFFSET UNLESS NOTED OTHERWISE.
3. ALL NEW SEWER SERVICES TO BE CONSTRUCTED PER THE ARKANSAS PLUMBING CODE, LATEST EDITION.

THE LOCATIONS OF EXISTING UNDERGROUND UTILITIES SHOWN ARE APPROXIMATE BASED ON THE BEST INFORMATION AVAILABLE AND MAY NOT REFLECT ALL EXISTING UTILITIES IN THE PROJECT AREA. THE CONTRACTOR IS RESPONSIBLE FOR CORROBORATING WITH THE UTILITY COMPANIES FOR LOCATING EXISTING UTILITIES PRIOR TO CONSTRUCTION AND FOR PROTECTION OF SERVICES DURING CONSTRUCTION.

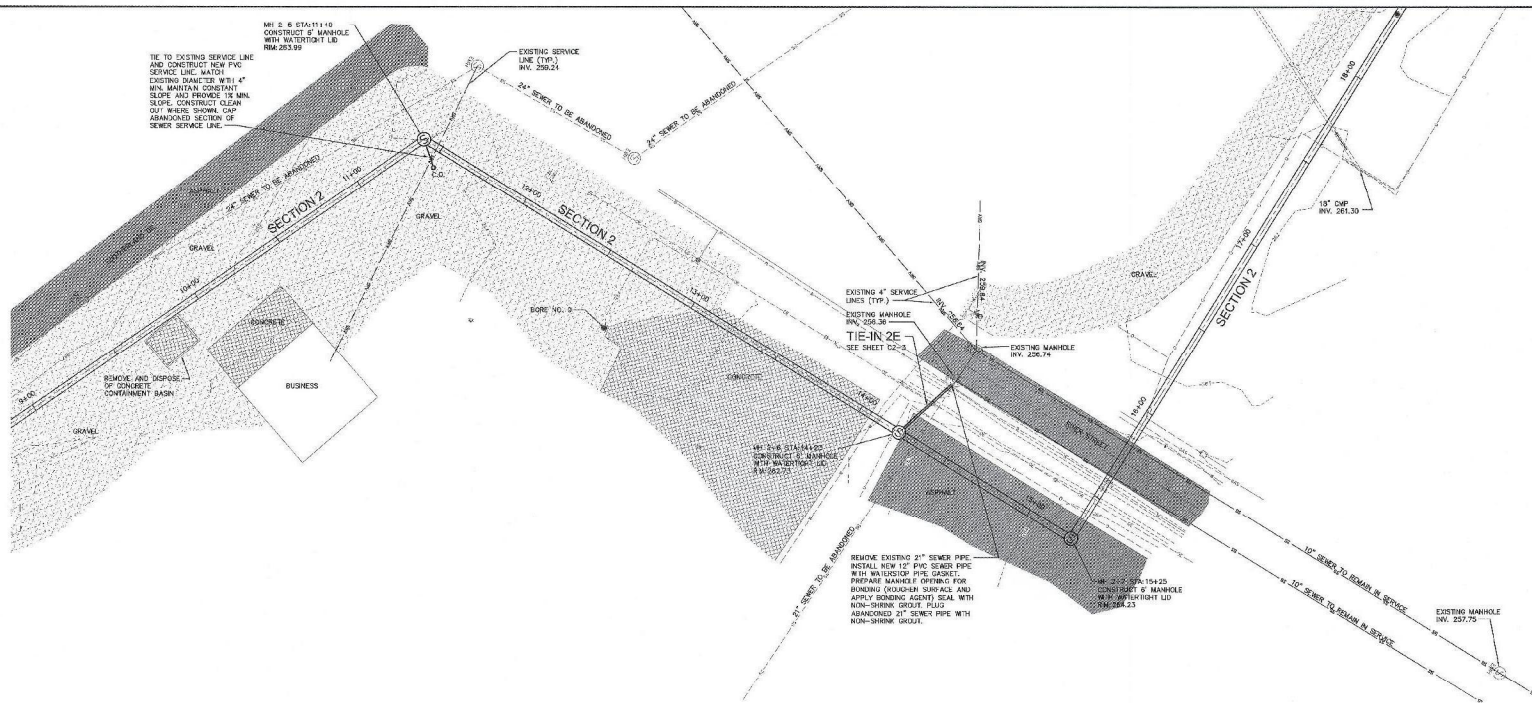


| REV. | DATE | BY | DESCRIPTION |
|------|------|----|-------------|
|      |      |    |             |
|      |      |    |             |
|      |      |    |             |

|             |          |     |
|-------------|----------|-----|
| DESIGNED    | BY       | ELH |
| DRAWN       | BY       | RC  |
| PROJECT NO. | BA138CS3 |     |



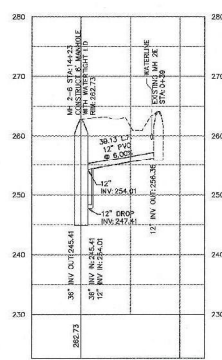
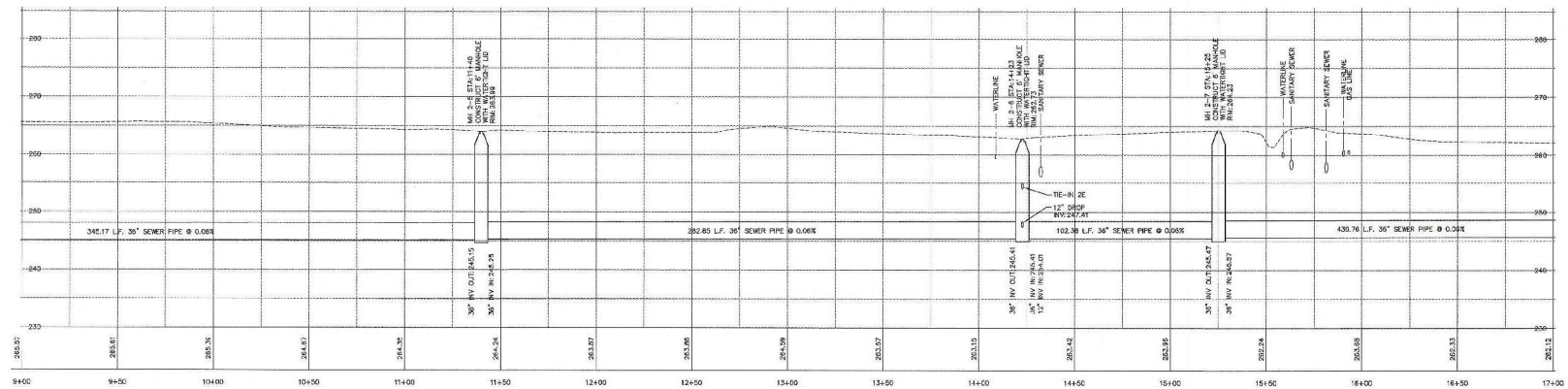
|   |  |                   |
|---|--|-------------------|
| WASTEWATER TREATMENT FACILITY MODIFICATIONS AND IMPROVEMENTS<br>CONTRACT SECTION 3 - PRIMARY INTERCEPTOR SEWER IMPROVEMENTS<br>BATESVILLE, ARKANSAS |  | STRUCTURE NO.     |
| SANITARY SEWER<br>TIE-IN 2A, 2B, 2C, 2D<br>PLAN AND PROFILE   |  | SHEET NO.<br>C2-2 |



**LEGEND**

- EXISTING CONCRETE
- EXISTING ASPHALT
- EXISTING GRAVEL
- 1" CONTOUR
- SANITARY SEWER TO BE ABANDONED
- SANITARY SEWER SERVICE LINE
- SANITARY SEWER TO REMAIN IN SERVICE
- OVERHEAD ELECTRIC
- UNDERGROUND ELECTRIC
- UNDERGROUND TELEPHONE
- GAS LINE
- FIBER OPTIC LINE
- WATER LINE
- RIGHT-OF-WAY
- DITCH FLOW LINE
- RAIL FENCE
- CHAINING FENCE
- BARRICADE FENCE
- BOARD FENCE
- EXISTING FIRE HYDRANT
- EXISTING WATER METER
- EXISTING POWER POLE
- EXISTING DOWN GUY
- EXISTING MANHOLE

- GENERAL CONSTRUCTION NOTES**
- CAUTION IN ALL AREAS OF OVERHEAD POWER LINES. ALL OVERHEAD POWER LINES MAY NOT BE SHOWN ON THESE PLANS.
  - THE LOCATION OF ALL EXISTING UTILITIES SHOWN ON THESE PLANS IS APPROXIMATE AND SHALL BE FIELD VERIFIED. UTILITIES SHOWN IN PROFILE VIEWS ARE SHOWN AT TYPICAL DEPTH UNLESS NOTED OTHERWISE.
  - ALL NEW SEWER SERVICES TO BE CONSTRUCTED PER THE ARKANSAS PLUMBING CODE, LATEST EDITION.



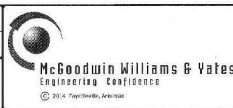
THE LOCATIONS OF EXISTING UNDERGROUND UTILITIES SHOWN ARE APPROXIMATE BASED ON THE BEST INFORMATION AVAILABLE AND MAY NOT REPRESENT ALL EXISTING UTILITIES IN THE PROJECT AREA. THE CONTRACTOR IS RESPONSIBLE FOR COORDINATING WITH THE UTILITY COMPANIES FOR LOCATING EXISTING UTILITIES PRIOR TO CONSTRUCTION AND FOR PROTECTION OF SERVICES DURING CONSTRUCTION.



| REV | DATE | BY | DESCRIPTION |
|-----|------|----|-------------|
|     |      |    |             |



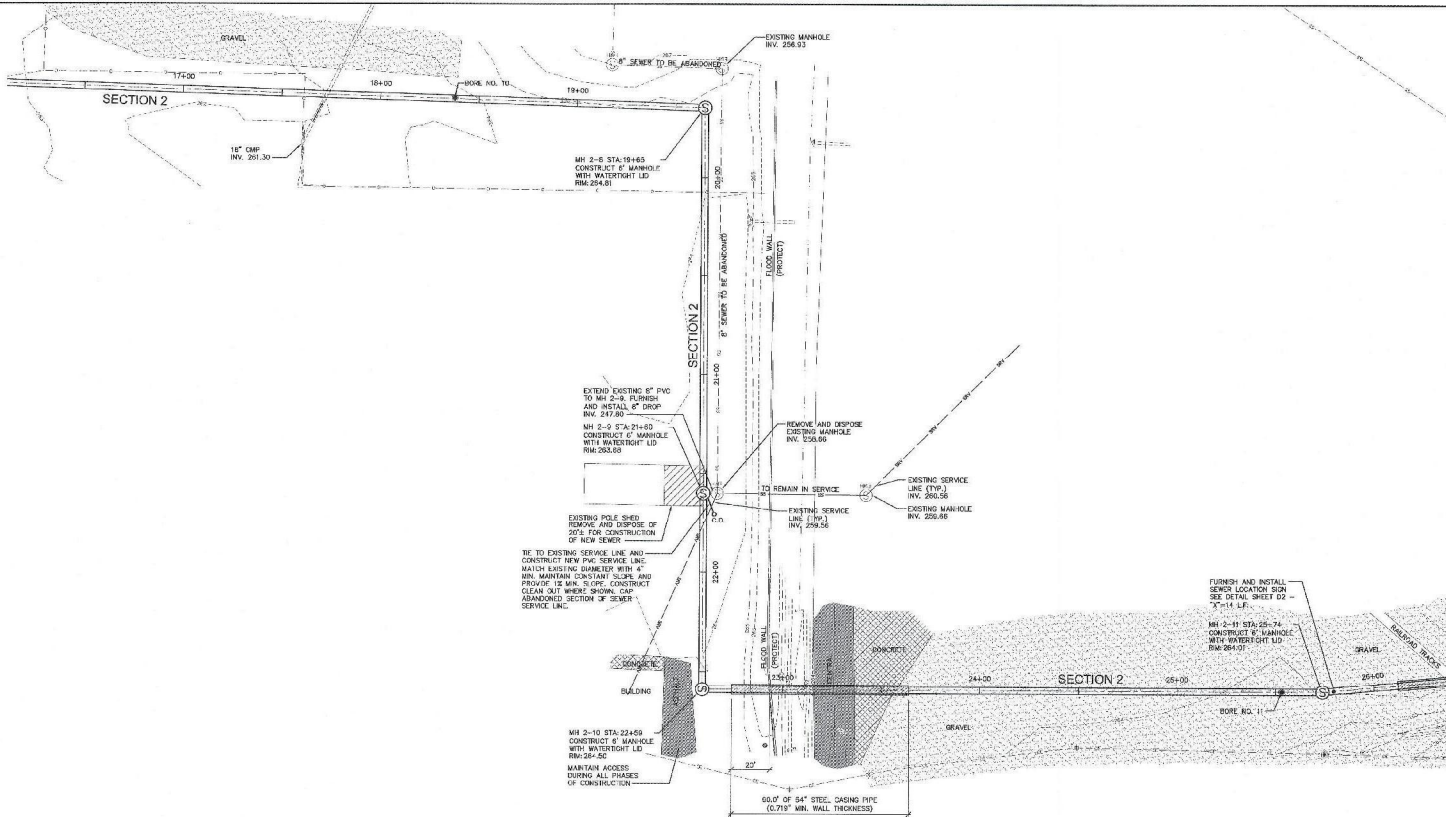
DESIGNED: **CHD**  
 DRAWN: **ELH**  
 CHECKED: **RC**  
 IN CHARGE: **RC**  
 PLANS NO: **BA138CS3**



WASTEWATER TREATMENT FACILITY MODIFICATIONS AND IMPROVEMENTS  
 CONTRACT SECTION 3 - PRIMARY INTERCEPTOR SEWER IMPROVEMENTS  
 BATESVILLE, ARKANSAS

**SANITARY SEWER  
 SECTION 2 AND TIE-IN 2E  
 PLAN AND PROFILE**

SHEET NO. **C2-3**



0 10 20 30 40  
SCALE: 1" = 30'

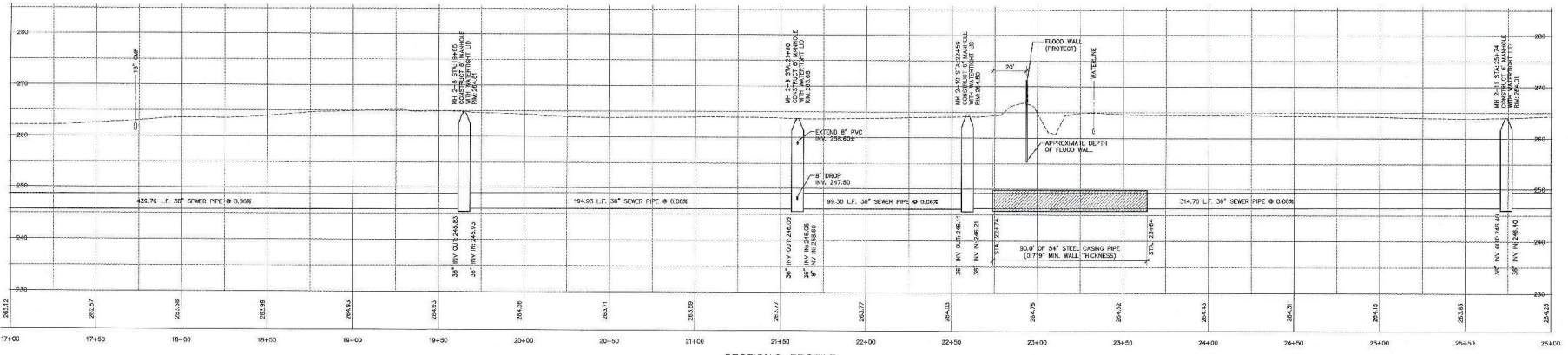
N

LEGEND

- EXISTING CONCRETE
- EXISTING ASPHALT
- EXISTING GRAVEL
- 1' CONTOURS
- SANITARY SEWER TO BE ABANDONED
- SANITARY SEWER SERVICE LINE
- SANITARY SEWER TO REMAIN IN SERVICE
- OVERHEAD ELECTRIC
- UNDERGROUND ELECTRIC
- GAS LINE
- FIBER OPTIC LINE
- WATER LINE
- RIGHT-OF-WAY
- DITCH/FLOW LINE
- RAIL FENCE
- CHAINLINK FENCE
- BARBED WIRE FENCE
- BOARD FENCE
- EXISTING FIRE HYDRANT
- EXISTING WATER METER
- EXISTING POWER POLE
- EXISTING MANHOLE

GENERAL CONSTRUCTION NOTES:

1. CAUTION IN ALL AREAS OF OVERHEAD POWER LINES. ALL OVERHEAD POWER LINES MAY NOT BE SHOWN ON THESE PLANS.
2. THE LOCATION OF ALL EXISTING UTILITIES SHOWN ON THESE PLANS IS APPROXIMATE AND SHALL BE FIELD VERIFIED. UTILITIES SHOWN IN PROFILE VIEWS ARE SHOWN AT TYPICAL DEPTHS UNLESS NOTED OTHERWISE.
3. ALL NEW SEWER SERVICES TO BE CONSTRUCTED PER THE ARKANSAS PLUMBING CODE, LATEST EDITION.



THE LOCATIONS OF EXISTING UNDERGROUND UTILITIES SHOWN ARE APPROXIMATE BASED ON THE BEST INFORMATION AVAILABLE AND MAY NOT REFLECT ALL EXISTING UTILITIES IN THE PROJECT AREA. THE CONTRACTOR IS RESPONSIBLE FOR COORDINATING WITH THE UTILITY COMPANIES FOR LOCATING EXISTING UTILITIES PRIOR TO CONSTRUCTION AND FOR PROTECTION OF SERVICES DURING CONSTRUCTION.



| REV | DATE | BY | DESCRIPTION |
|-----|------|----|-------------|
|     |      |    |             |



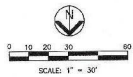
DESIGNED BY: JWM  
CHECKED BY: ELH  
PLANNED BY: RC  
PROJECT NO.: BA138C3  
McGoodwin Williams & Yates  
ENGINEERING CONSULTANTS  
© 2011 THE STATE OF ARKANSAS

WASTEWATER TREATMENT FACILITY MODIFICATIONS AND IMPROVEMENTS  
CONTRACT SECTION 3 - PRIMARY INTERCEPTOR SEWER IMPROVEMENTS  
BATESVILLE, ARKANSAS

**SANITARY SEWER  
SECTION 2  
PLAN AND PROFILE**

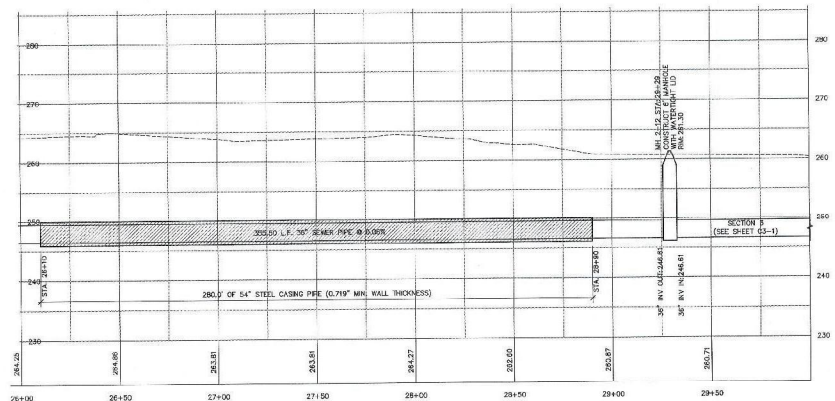
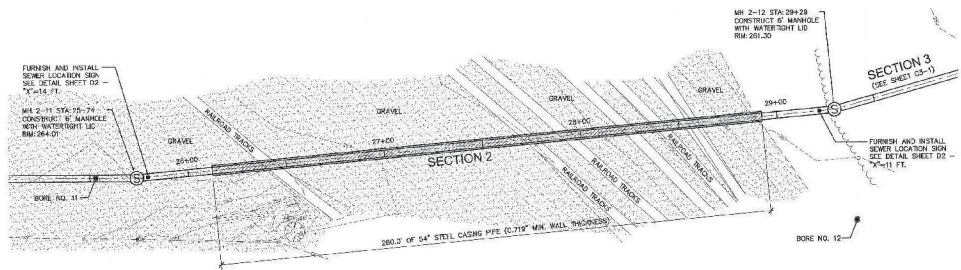
SHEET NO. C2-4

X:\admin\ba138c3\DWG\BA138C3-SECT2.dwg (24.4.14) 09:11:33:22 AM ensh PDF2006 ARCC-D-11



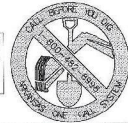
| LEGEND |                                     |
|--------|-------------------------------------|
|        | EXISTING CONCRETE                   |
|        | EXISTING ASPHALT                    |
|        | EXISTING GRAVEL                     |
|        | 1" CONTOURS                         |
|        | SANITARY SEWER TO BE ABANDONED      |
|        | SANITARY POWER REFERENCE LINE       |
|        | SANITARY SEWER TO REMAIN IN SERVICE |
|        | OVERHEAD ELECTRIC                   |
|        | UNDERGROUND ELECTRIC                |
|        | UNDERGROUND TELEPHONE               |
|        | GAS LINE                            |
|        | FIBER OPTIC LINE                    |
|        | WALKWAY                             |
|        | DRIVEWAY                            |
|        | DITCH FLOW LINE                     |
|        | RAIL FENCE                          |
|        | CHAINLINK FENCE                     |
|        | BARBED WIRE FENCE                   |
|        | BOARD FENCE                         |
|        | EXISTING FIRE HYDRANT               |
|        | EXISTING WATER METER                |
|        | EXISTING MANHOLE                    |
|        | EXISTING DOWN GUY                   |

- GENERAL CONSTRUCTION NOTES:**
- CAUTION IN ALL AREAS OF OVERHEAD POWER LINES. ALL OVERHEAD POWER LINES MAY NOT BE SHOWN ON THESE PLANS.
  - THE LOCATION OF ALL EXISTING UTILITIES SHOWN ON THESE PLANS IS APPROXIMATE AND SHALL BE FIELD VERIFIED. UTILITIES SHOWN IN PROFILE GRIDS ARE SHOWN AT TYPICAL DEPTHS UNLESS NOTED OTHERWISE.
  - ALL NEW SEWER SERVICES TO BE CONSTRUCTED PER THE ARKANSAS PLUMBING CODE, LATEST EDITION.



**SECTION 2 - PROFILE**  
HOR: 1"=30' VERT: 1"=10'

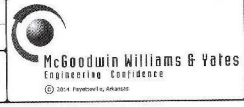
THE LOCATIONS OF EXISTING UNDERGROUND UTILITIES SHOWN ARE APPROXIMATE BASED ON THE BEST INFORMATION AVAILABLE AND MAY NOT REFLECT ALL EXISTING UTILITIES IN THE PROJECT AREA. THE CONTRACTOR IS RESPONSIBLE FOR COORDINATING WITH THE UTILITY COMPANIES FOR LOCATING EXISTING UTILITIES PRIOR TO CONSTRUCTION AND FOR PROTECTION OF SERVICES DURING CONSTRUCTION.



| REV | DATE | BY | DESCRIPTION |
|-----|------|----|-------------|
|     |      |    |             |



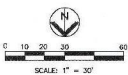
DESIGNED BY: ELH  
CHECKED BY: RC  
PLANE NO.: BA138CS3



|   |  |                          |
|---|--|--------------------------|
| WASTEWATER TREATMENT FACILITY MODIFICATIONS AND IMPROVEMENTS<br>CONTRACT SECTION 3 - PRIMARY INTERCEPTOR SEWER IMPROVEMENTS<br>BATESVILLE, ARKANSAS |  | STRUCTURE NO.            |
| <b>SANITARY SEWER<br/>SECTION 2<br/>PLAN AND PROFILE</b>  |  | SHEET NO.<br><b>C2-5</b> |

X:\mwh\ba138cs3\ba138cs3.dwg C:\S\0110114\32512.dwg 10/19/06 ARCH:LT



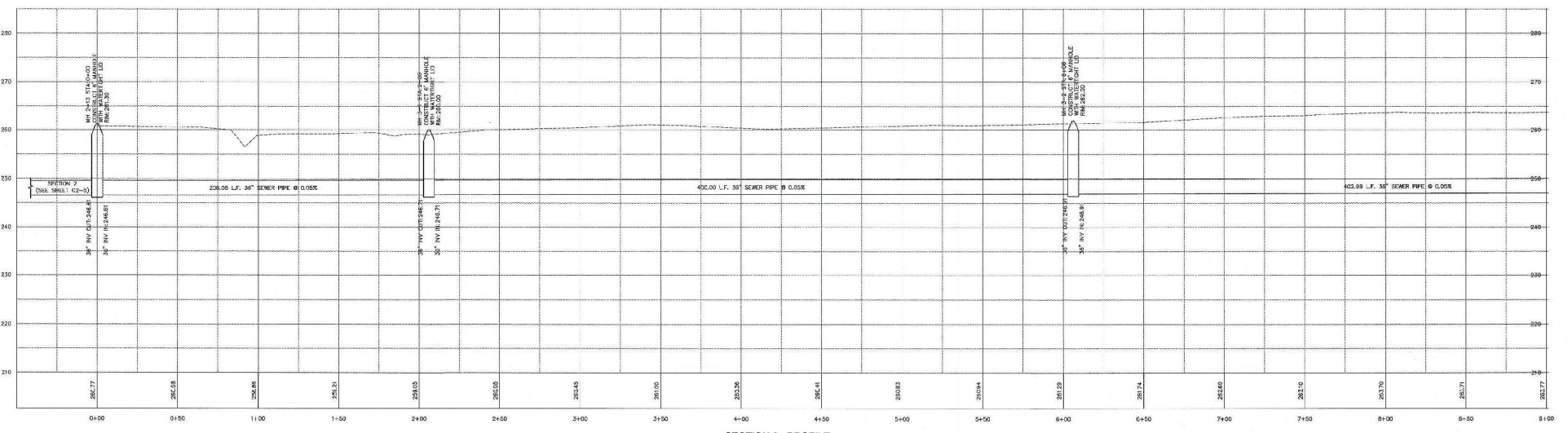
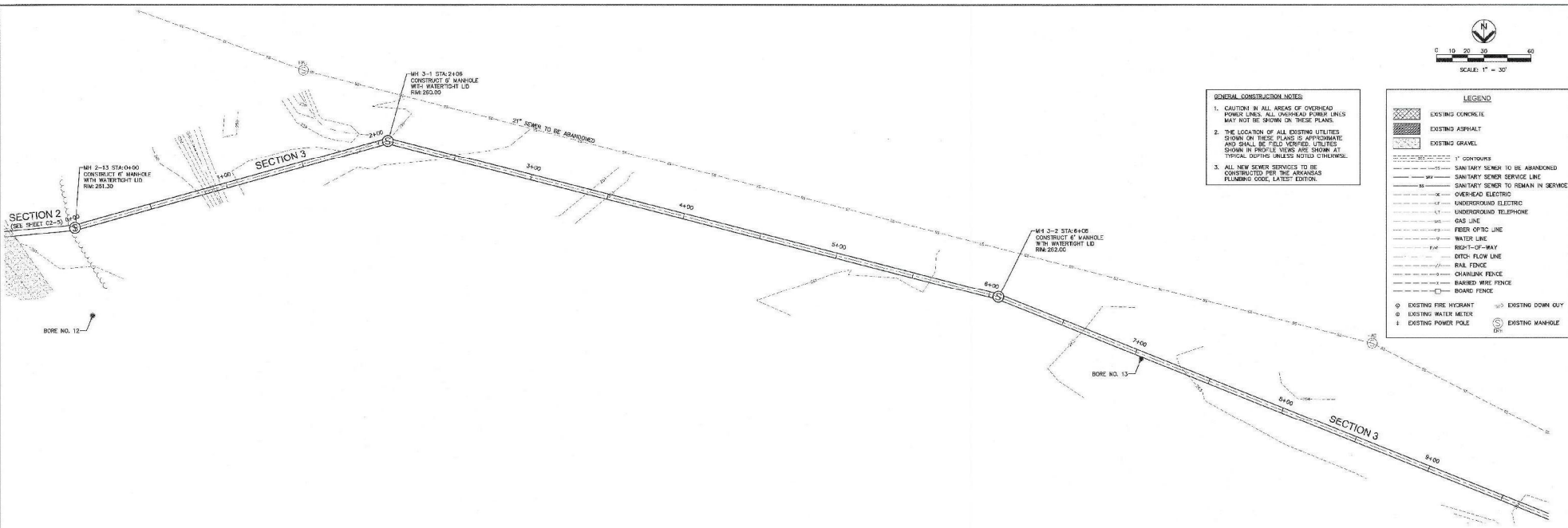


**GENERAL CONSTRUCTION NOTES:**

1. CAUTION IN ALL AREAS OF OVERHEAD POWER LINES. ALL OVERHEAD POWER LINES MAY NOT BE SHOWN ON THESE PLANS.
2. THE LOCATION OF ALL EXISTING UTILITIES SHOWN ON THESE PLANS IS APPROXIMATE AND SHALL BE FIELD VERIFIED. UTILITIES SHOWN IN PROFILE VIEWS ARE SHOWN AT TYPICAL DEPTHS UNLESS NOTED OTHERWISE.
3. ALL NEW SEWER SERVICES TO BE CONSTRUCTED PER THE ARKANSAS PLUMBING CODE, LATEST EDITION.

**LEGEND**

|  |                                     |
|--|-------------------------------------|
|  | EXISTING CONCRETE                   |
|  | EXISTING ASPHALT                    |
|  | EXISTING GRAVEL                     |
|  |                                     |
|  | SANITARY SEWER TO BE ABANDONED      |
|  | SANITARY SEWER TO REMAIN IN SERVICE |
|  | OVER-HEAD ELECTRIC                  |
|  | UNDERGROUND ELECTRIC                |
|  | UNDERGROUND TELEPHONE               |
|  | GAS LINE                            |
|  | FIBER OPTIC LINE                    |
|  | WATER LINE                          |
|  | RIGHT-OF-WAY                        |
|  | DITCH FLOW LINE                     |
|  | RAIL FENCE                          |
|  | CHAINLINK FENCE                     |
|  | BARBED WIRE FENCE                   |
|  | BOARD FENCE                         |
|  | EXISTING FIRE HYDRANT               |
|  | EXISTING WATER METER                |
|  | EXISTING POWER POLE                 |
|  | EXISTING MANHOLE                    |



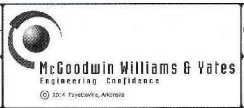
**SECTION 3 - PROFILE**  
HORZ: 1"=30' VERT: 1"=10'

THE LOCATIONS OF EXISTING UNDERGROUND UTILITIES SHOWN ARE APPROXIMATE BASED ON THE BEST INFORMATION AVAILABLE AND MAY NOT REFLECT ALL EXISTING UTILITIES IN THE PROJECT AREA. THE CONTRACTOR IS RESPONSIBLE FOR COORDINATING WITH THE UTILITY COMPANIES FOR LOCATING EXISTING UTILITIES PRIOR TO CONSTRUCTION AND FOR PROTECTION OF SERVICES DURING CONSTRUCTION.



| REV. | DATE | BY | DESCRIPTION |
|------|------|----|-------------|
|      |      |    |             |
|      |      |    |             |

DESIGNED: CBD  
DRAWN: ELH  
CHECKED: RC  
PLANS NO.: BA13BCS3

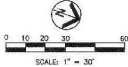
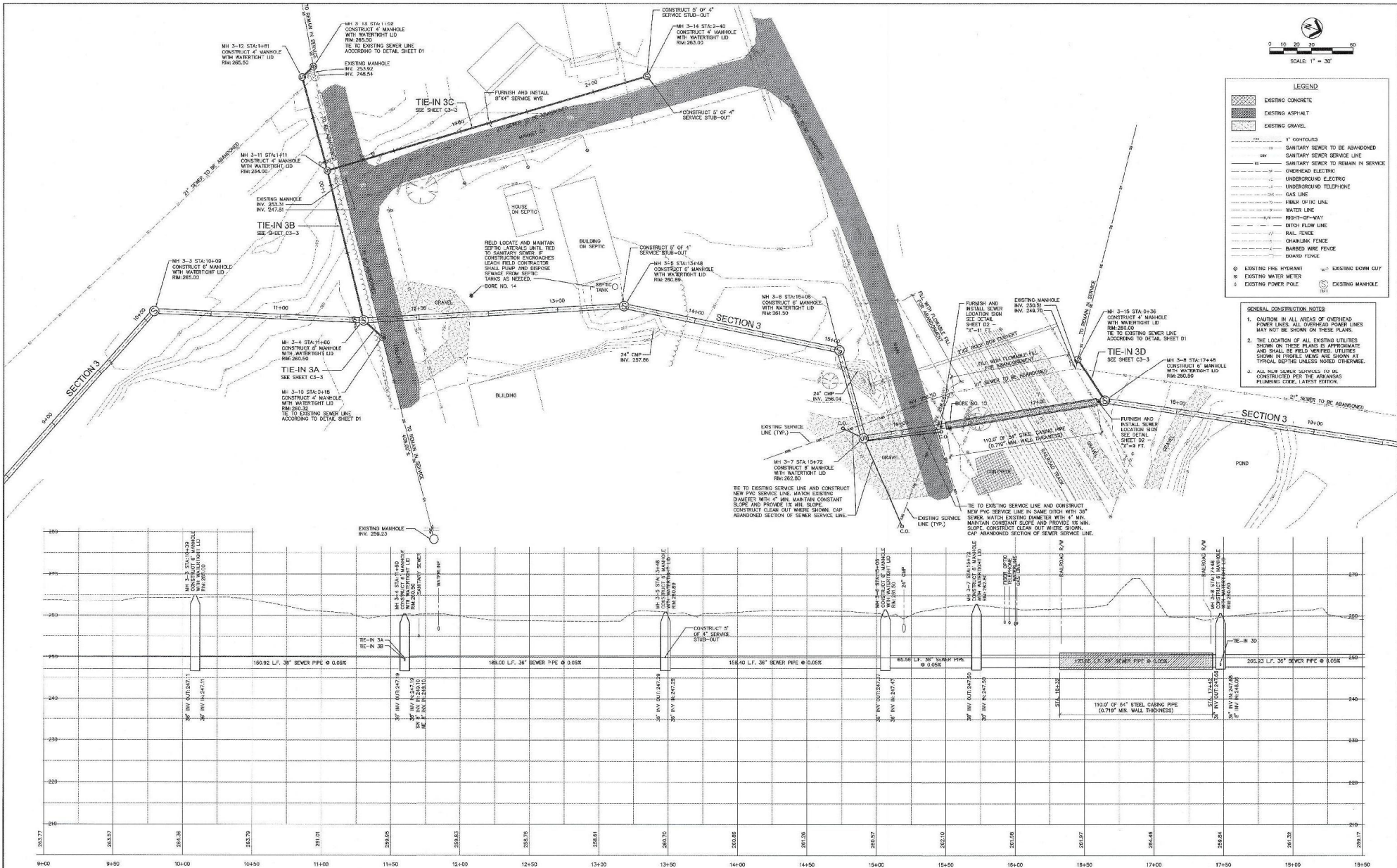


WASTEWATER TREATMENT FACILITY MODIFICATIONS AND IMPROVEMENTS  
CONTRACT SECTION 3 - PRIMARY INTERCEPTOR SEWER IMPROVEMENTS  
BATESVILLE, ARKANSAS

**SANITARY SEWER SECTION 3 PLAN AND PROFILE**

SHEET NO. **C3-1**

X:\AR\BAMA\PROJECTS\DIVISION\PROJECTS\CAD\15\18274\3-2723\DWG\18274S3.DWG



**LEGEND**

|  |                                     |
|--|-------------------------------------|
|  | EXISTING CONCRETE                   |
|  | EXISTING ASPHALT                    |
|  | EXISTING GRAVEL                     |
|  | 4" CONTOURS                         |
|  | SANITARY SEWER TO BE ABANDONED      |
|  | SANITARY SEWER TO REMAIN IN SERVICE |
|  | OVERHEAD ELECTRIC                   |
|  | UNDERGROUND ELECTRIC                |
|  | UNDERGROUND TELEPHONE               |
|  | GAS LINE                            |
|  | FIRE HYDRANT LINE                   |
|  | WATER LINE                          |
|  | RIGHT-OF-WAY                        |
|  | DITCH FLOW LINE                     |
|  | RAIL FENCE                          |
|  | CHAINLINK FENCE                     |
|  | BARBED WIRE FENCE                   |
|  | BOUNDARY LINE                       |
|  | EXISTING FIRE HYDRANT               |
|  | EXISTING WATER METER                |
|  | EXISTING POWER POLE                 |
|  | EXISTING MANHOLE                    |

- GENERAL CONSTRUCTION NOTES**
- CAUTION IN ALL AREAS OF OVERHEAD POWER LINES. ALL OVERHEAD POWER LINES MAY NOT BE SHOWN ON THESE PLANS.
  - THE LOCATION OF ALL EXISTING UTILITIES SHOWN ON THESE PLANS IS APPROXIMATE AND SHALL BE FIELD VERIFIED UTILITIES SHOWN IN TIE-IN, NEW AND SHOWN AT TYPICAL DEPTHS UNLESS NOTED OTHERWISE.
  - ALL NEW SEWER SERVICES TO BE CONSTRUCTED PER THE ARKANSAS PLUMBING CODE, LATEST EDITION.

THE LOCATIONS OF EXISTING UNDERGROUND UTILITIES SHOWN ARE APPROXIMATE BASED ON THE BEST INFORMATION AVAILABLE AND MAY NOT REFLECT ALL EXISTING UTILITIES IN THE PROJECT AREA. THE CONTRACTOR IS RESPONSIBLE FOR COORDINATING WITH THE UTILITY COMPANIES FOR LOCATING EXISTING UTILITIES PRIOR TO CONSTRUCTION AND FOR PROTECTION OF SERVICES DURING CONSTRUCTION.



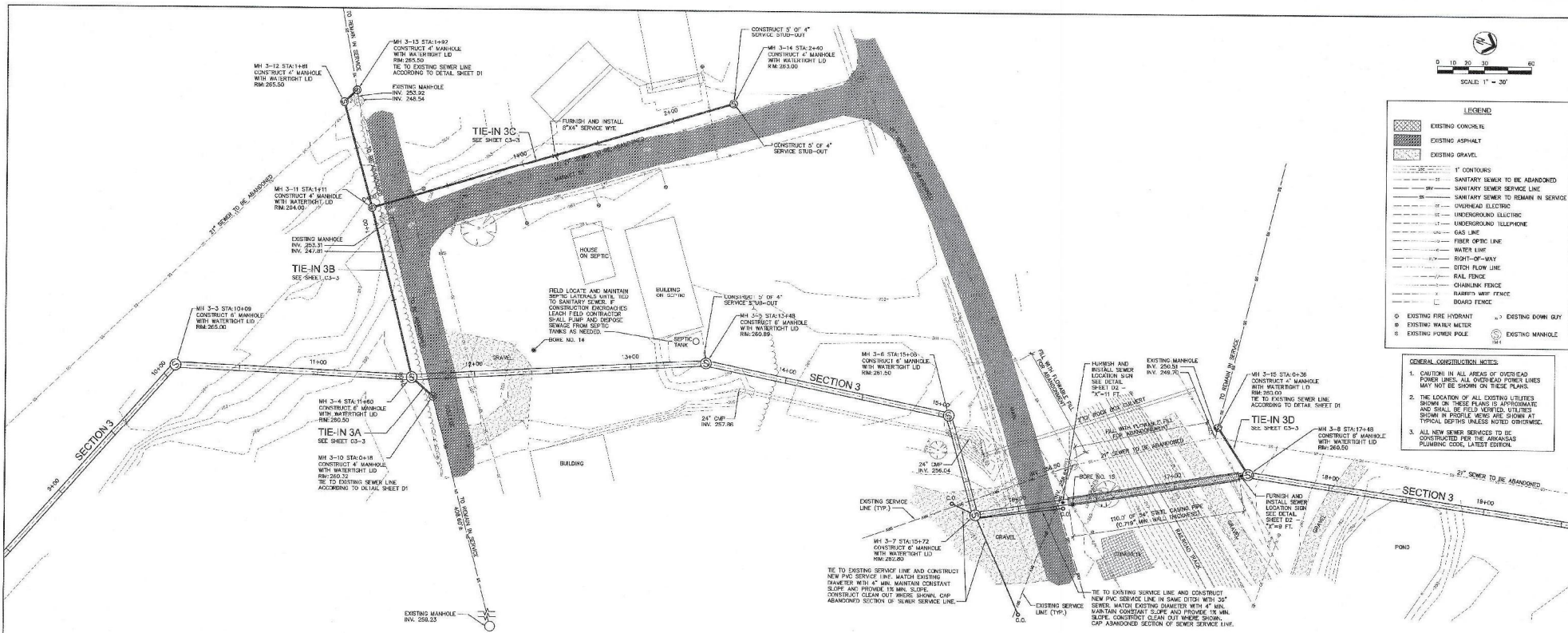
|      |      |    |             |
|------|------|----|-------------|
| REV. | DATE | BY | DESCRIPTION |
|      |      |    |             |



DESIGNED: **CBD**  
 DRAWN: **ELH**  
 CHECKED: **NC**  
 IN CHARGE: **BA138CS3**  
 PLANK NO. **14497**  
 DATE **08/20/2018**  
 EXPIRES **08/20/2023**



|  |  |               |
|--|--|---------------|
| WASTEWATER TREATMENT FACILITY MODIFICATIONS AND IMPROVEMENTS |  | STRUCTURE NO. |
| CONTRACT SECTION 3 - PRIMARY INTERCEPTOR SEWER IMPROVEMENTS  |  |               |
| BATESVILLE, ARKANSAS   |  |               |
| SANITARY SEWER SECTION 3                                     |  | SHEET NO.     |
| PLAN AND PROFILE   |  | <b>C3-2</b>   |

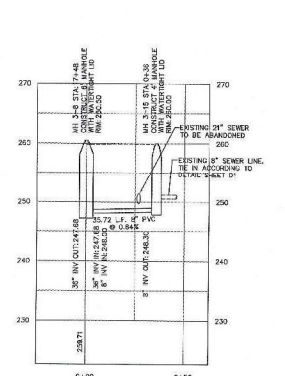
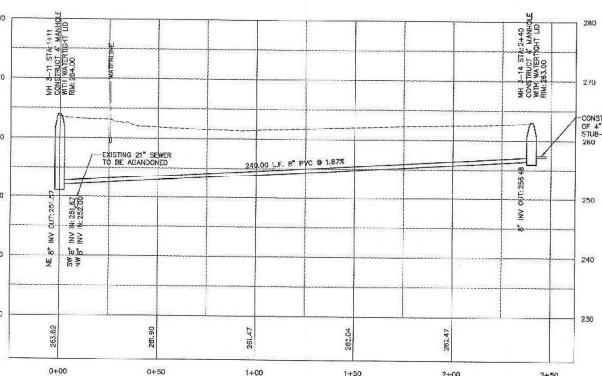
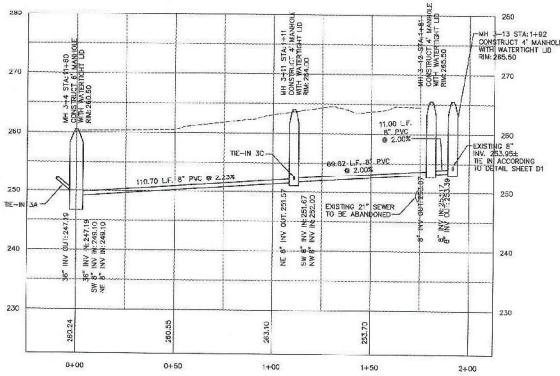
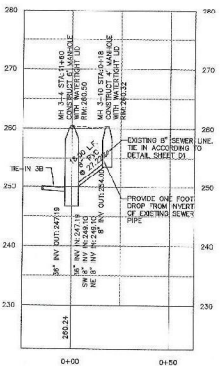


**LEGEND**

- EXISTING CONCRETE
- EXISTING ASPHALT
- EXISTING GRAVEL
- 1' CONTOURS
- SANITARY SEWER TO BE ABANDONED
- SANITARY SEWER TO REMAIN IN SERVICE
- UNDERGROUND ELECTRIC
- OVERHEAD ELECTRIC
- UNDERGROUND TELEPHONE
- GAS LINE
- FIBER OPTIC LINE
- WATER LINE
- RIGHT-OF-WAY
- DITCH FLOW LINE
- RAIL FENCE
- CHARMING FENCE
- HARDY'S WIRE FENCE
- BOARD FENCE
- EXISTING FIRE HYDRANT
- EXISTING WALK METER
- EXISTING POWER POLE
- EXISTING DOWN GUY
- EXISTING MANHOLE

**GENERAL CONSTRUCTION NOTES**

- CAUTION IN ALL AREAS OF OVERHEAD POWER LINES. ALL OVERHEAD POWER LINES MAY NOT BE SHOWN ON THESE PLANS.
- THE LOCATION OF ALL EXISTING UTILITIES AND SHALL BE FIELD VERIFIED. UTILITIES NOT SHOWN IN THESE PLANS ARE SHOWN AT TYPICAL DEPTHS UNLESS NOTED OTHERWISE.
- ALL NEW SERVICES TO BE CONSTRUCTED PER THE ARKANSAS PLUMBING CODE, LATEST EDITION.



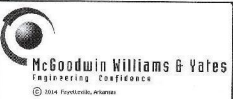
THE LOCATIONS OF EXISTING UNDERGROUND UTILITIES SHOWN ARE APPROXIMATE BASED ON THE BEST INFORMATION AVAILABLE AND MAY NOT REFLECT ALL EXISTING UTILITIES IN THE PROJECT AREA. THE CONTRACTOR IS RESPONSIBLE FOR COORDINATING WITH THE UTILITY COMPANIES FOR LOCATING EXISTING UTILITIES PRIOR TO CONSTRUCTION AND FOR PROTECTION OF SERVICES DURING CONSTRUCTION.



| REV | DATE | BY | DESCRIPTION |
|-----|------|----|-------------|
|     |      |    |             |



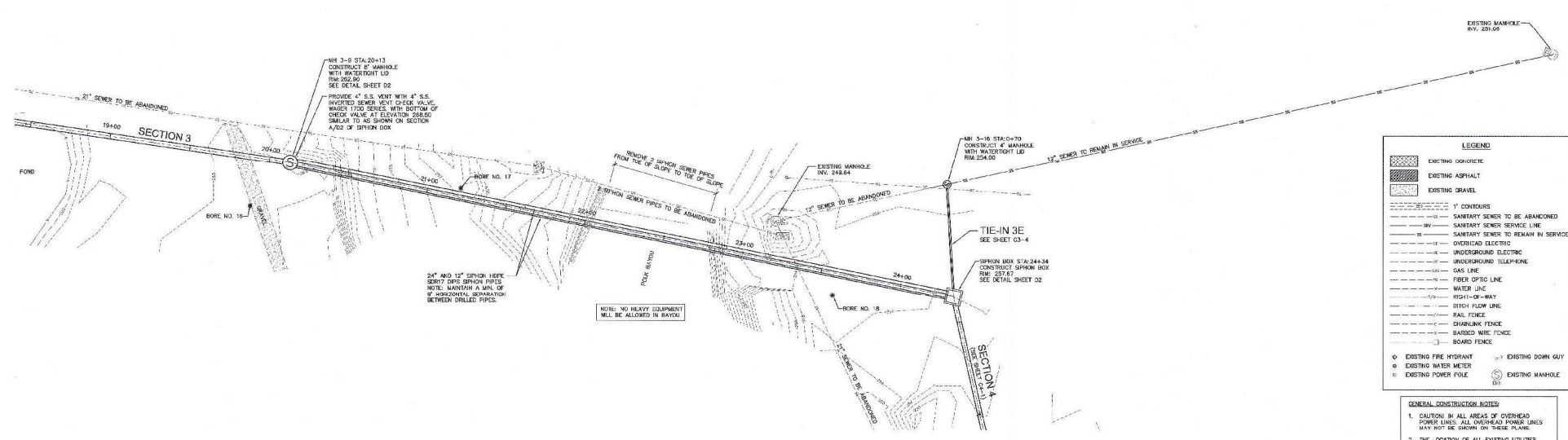
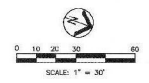
DESIGNED: ODD  
DRAWN: ELH  
CHECKED: RC  
SCALE: N/A  
**BA138CS3**



WASTEWATER TREATMENT FACILITY MODIFICATIONS AND IMPROVEMENTS  
CONTRACT SECTION 3 - PRIMARY INTERCEPTOR SEWER IMPROVEMENTS  
BATESVILLE, ARKANSAS

**SANITARY SEWER  
TIE-IN 3A, 3B, 3C, 3D  
PLAN AND PROFILE**

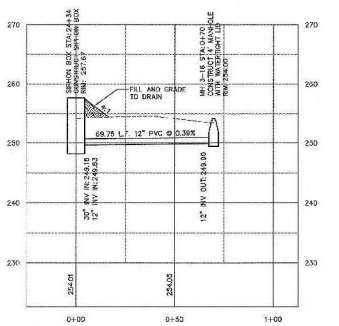
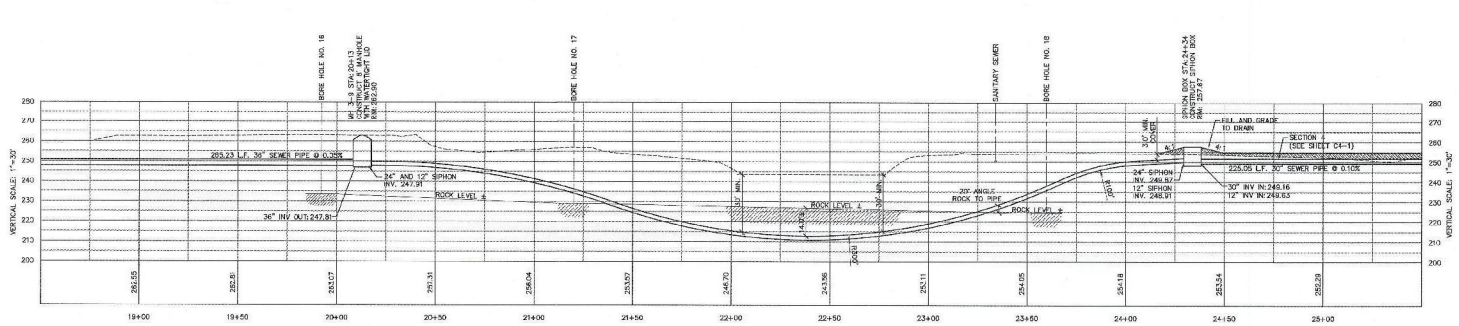
STANDARD NO. **C3-3**  
SHEET NO. **C3-3**



**LEGEND**

|  |                                     |
|--|-------------------------------------|
|  | EXISTING OBSTRUCTIVE                |
|  | EXISTING ASPHALT                    |
|  | EXISTING GRAVEL                     |
|  | 1' CONTOURS                         |
|  | SANITARY SEWER TO BE ABANDONED      |
|  | SANITARY SEWER SERVICE LINE         |
|  | SANITARY SEWER TO REMAIN IN SERVICE |
|  | OVERHEAD ELECTRIC                   |
|  | UNDERGROUND ELECTRIC                |
|  | UNDERGROUND TELEPHONE               |
|  | GAS LINE                            |
|  | FIBER OPTIC LINE                    |
|  | WATER LINE                          |
|  | HIGH-RISE-WAY                       |
|  | DITCH FLOW LINE                     |
|  | RAIL FENCE                          |
|  | CHAINLINK FENCE                     |
|  | BARBED WIRE FENCE                   |
|  | BOARD FENCE                         |
|  | EXISTING FIRE HYDRANT               |
|  | EXISTING WATER METER                |
|  | EXISTING POWER POLE                 |
|  | EXISTING MANHOLE                    |

- GENERAL CONSTRUCTION NOTES:**
- CAUTION IN ALL AREAS OF OVERHEAD POWER LINES. ALL OVERHEAD POWER LINES MAY NOT BE SHOWN ON THESE PLANS.
  - THE LOCATION OF ALL EXISTING UTILITIES SHOWN ON THESE PLANS IS APPROXIMATE AND SHALL BE FIELD VERIFIED. UTILITIES SHOWN IN PROFILE VIEWS ARE SHOWN AT TYPICAL WIDTHS UNLESS NOTED OTHERWISE.
  - ALL NEW SEWER SERVICES TO BE CONSTRUCTED PER THE ARKANSAS PLUMBING CODE, LATEST EDITION.



THE LOCATIONS OF EXISTING UNDERGROUND UTILITIES SHOWN ARE APPROXIMATE BASED ON THE BEST INFORMATION AVAILABLE AND MAY NOT REFLECT ALL EXISTING UTILITIES IN THE PROJECT AREA. THE CONTRACTOR IS RESPONSIBLE FOR COORDINATING WITH THE UTILITY COMPANIES FOR LOCATING EXISTING UTILITIES PRIOR TO CONSTRUCTION AND FOR PROTECTION OF SERVICES DURING CONSTRUCTION.



|                 |              |               |                       |
|-----------------|--------------|---------------|-----------------------|
| DESIGNED<br>CDD | DRAWN<br>ELI | CHECKED<br>RC | PLANS NO.<br>BA138CS3 |
|                 |              |               |                       |
| REV             | DATE         | BY            | DESCRIPTION           |

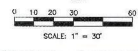
**McGowin Williams & Yates**  
Engineering Excellence  
© 2018 PWS-2018, Memphis

WASTEWATER TREATMENT FACILITY MODIFICATIONS AND IMPROVEMENTS  
CONTRACT SECTION 3 - PRIMARY INTERCEPT SEWER IMPROVEMENTS  
BATESVILLE, ARKANSAS

**SANITARY SEWER  
SECTION 3 AND TIE-IN 3E  
PLAN AND PROFILE**

DATE: 01/20/2018  
SHEET NO.: **C3-4**

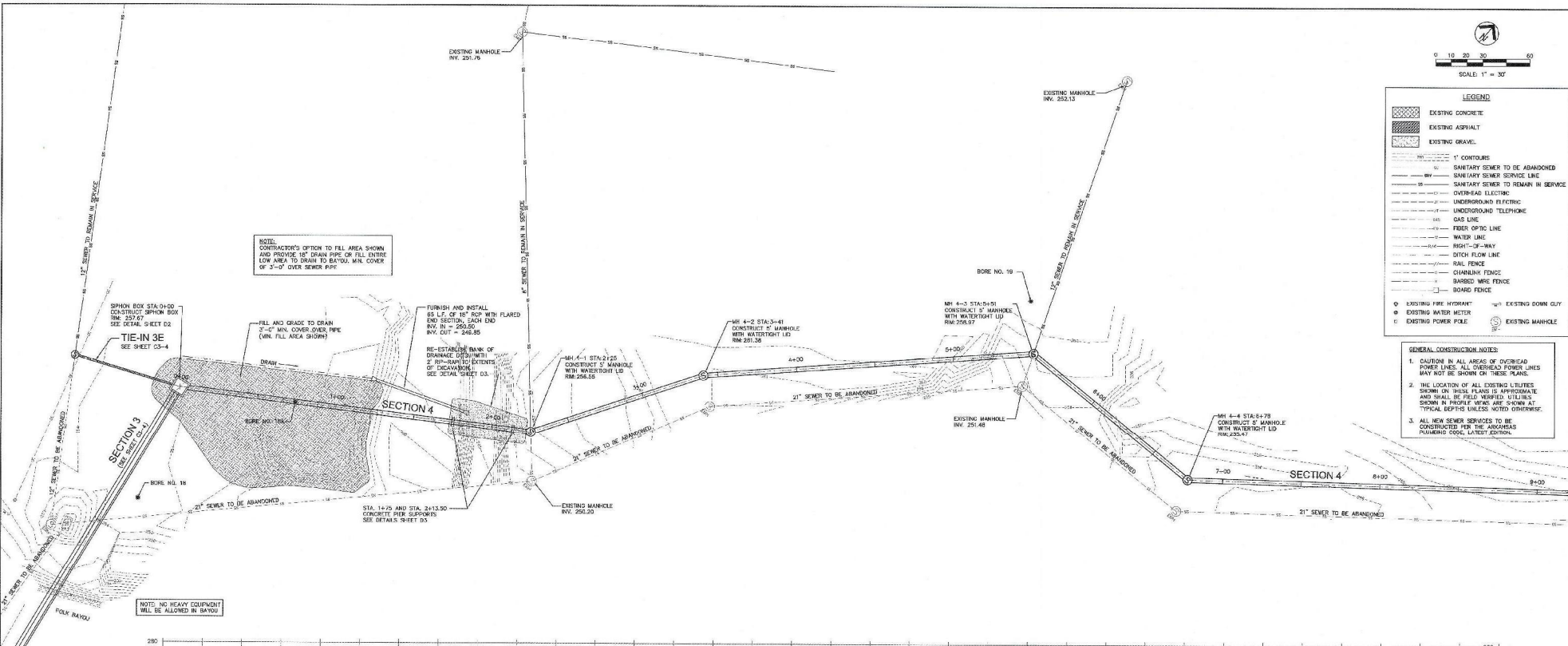
X:\Batesville\Batesville\DWG\BA138CS3 SECTION 3 AND TIE-IN 3E.dwg, PLOTDATE: 01/20/2018 10:41:00 AM



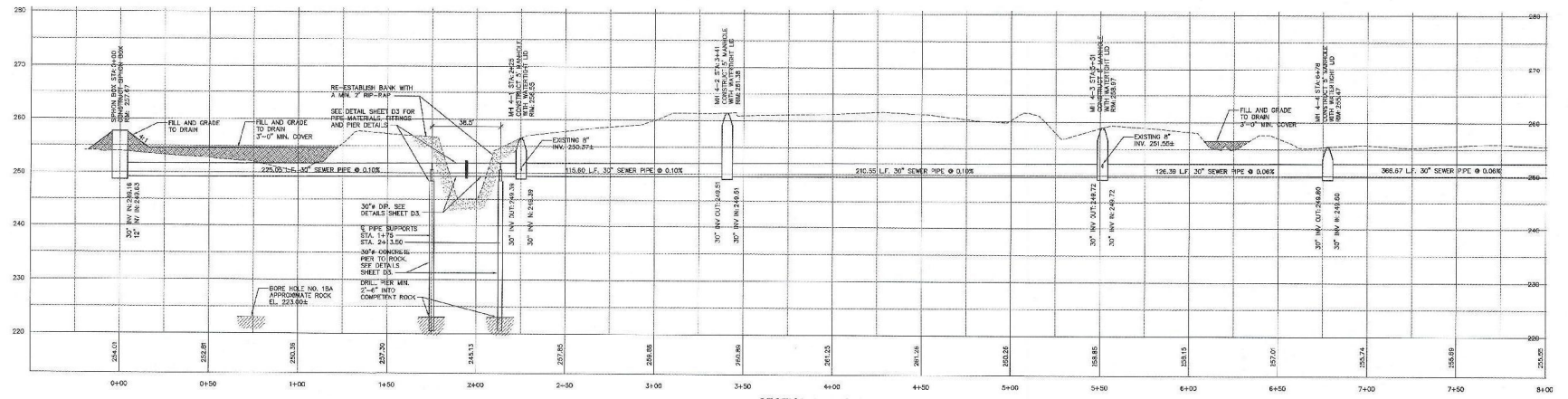
**LEGEND**

|          |                                     |
|----------|-------------------------------------|
| [Symbol] | EXISTING CONCRETE                   |
| [Symbol] | EXISTING ASPHALT                    |
| [Symbol] | EXISTING GRAVE                      |
| [Symbol] | 1" CONTOURS                         |
| [Symbol] | SANITARY SEWER TO BE ABANDONED      |
| [Symbol] | SANITARY SEWER SERVICE LINE         |
| [Symbol] | SANITARY SEWER TO REMAIN IN SERVICE |
| [Symbol] | OVERHEAD ELECTRIC                   |
| [Symbol] | UNDERGROUND ELECTRIC                |
| [Symbol] | UNDERGROUND TELEPHONE               |
| [Symbol] | GAS LINE                            |
| [Symbol] | FIBER OPTIC LINE                    |
| [Symbol] | WATER LINE                          |
| [Symbol] | RIGHT-OF-WAY                        |
| [Symbol] | DOTER FLOW LINE                     |
| [Symbol] | RAIL FENCE                          |
| [Symbol] | CHAINLINK FENCE                     |
| [Symbol] | BARBED WIRE FENCE                   |
| [Symbol] | BOARD FENCE                         |
| [Symbol] | EXISTING FIRE HYDRANT               |
| [Symbol] | EXISTING DOWN CULV                  |
| [Symbol] | EXISTING WATER METER                |
| [Symbol] | EXISTING POWER POLE                 |
| [Symbol] | EXISTING MANHOLE                    |

- GENERAL CONSTRUCTION NOTES:**
- CAUTION IN ALL AREAS OF OVERHEAD POWER LINES. ALL OVERHEAD POWER LINES MAY NOT BE SHOWN ON THESE PLANS.
  - THE LOCATION OF ALL EXISTING UTILITIES SHOWN IN THESE PLANS IS APPROXIMATE AND SHALL BE FIELD VERIFIED UTILITIES SHOWN IN PROFILE WERE ARE SHOWN AT TYPICAL OFFSET UNLESS NOTED OTHERWISE.
  - ALL NEW SEWER SERVICES TO BE CONSTRUCTED PER THE ARKANSAS PUMPING CODE, LATEST EDITION.



NOTE: NO HEAVY EQUIPMENT WILL BE ALLOWED IN BAYOU



SECTION 4 - PROFILE  
HORIZ: 1"=30' VERT: 1"=10'

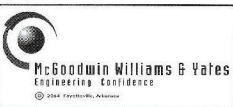
THE LOCATIONS OF EXISTING UNDERGROUND UTILITIES SHOWN ARE APPROXIMATE BASED ON THE BEST INFORMATION AVAILABLE AND MAY NOT REFLECT ALL EXISTING UTILITIES IN THE PROJECT AREA. THE CONTRACTOR IS RESPONSIBLE FOR COORDINATING WITH THE UTILITY COMPANIES FOR LOCATING EXISTING UTILITIES PRIOR TO CONSTRUCTION AND FOR PROTECTION OF SERVICES DURING CONSTRUCTION.



| REV | DATE | BY | DESCRIPTION |
|-----|------|----|-------------|
|     |      |    |             |
|     |      |    |             |



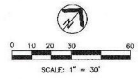
|           |          |       |     |
|-----------|----------|-------|-----|
| DESIGNED  | CBD      | DRAWN | ELM |
| CHECKED   | RC       |       |     |
| PLANS NO. | BA138CS3 |       |     |



WASTEWATER TREATMENT FACILITY MODIFICATIONS AND IMPROVEMENTS  
CONTRACT SECTION 3 - PRIMARY INTERCEPT SEWER IMPROVEMENTS  
BATESVILLE, ARKANSAS

**SANITARY SEWER SECTION 4**  
PLAN AND PROFILE

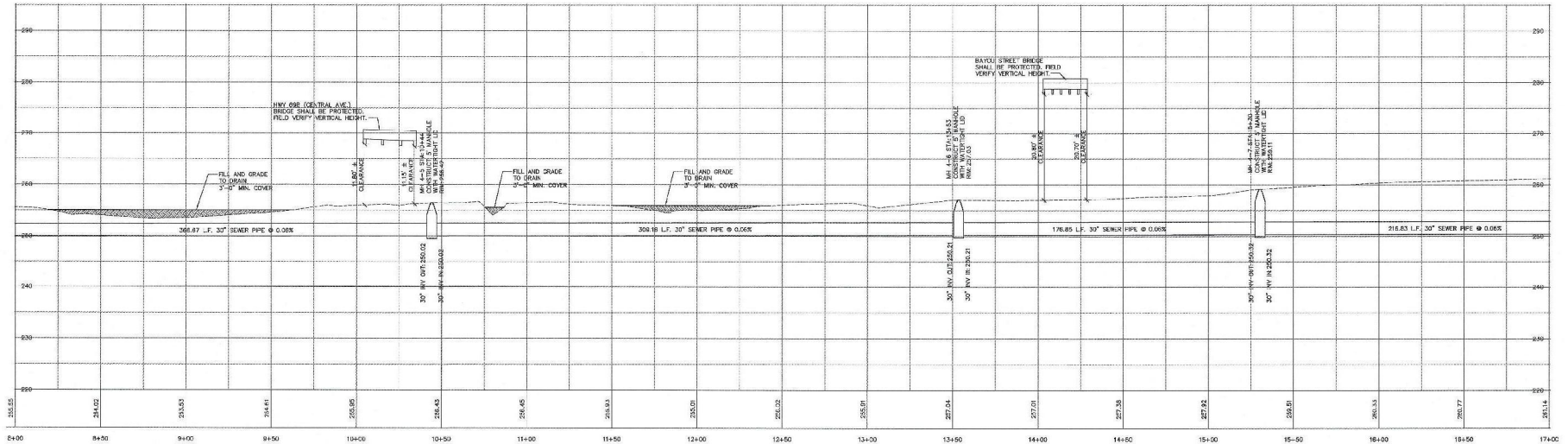
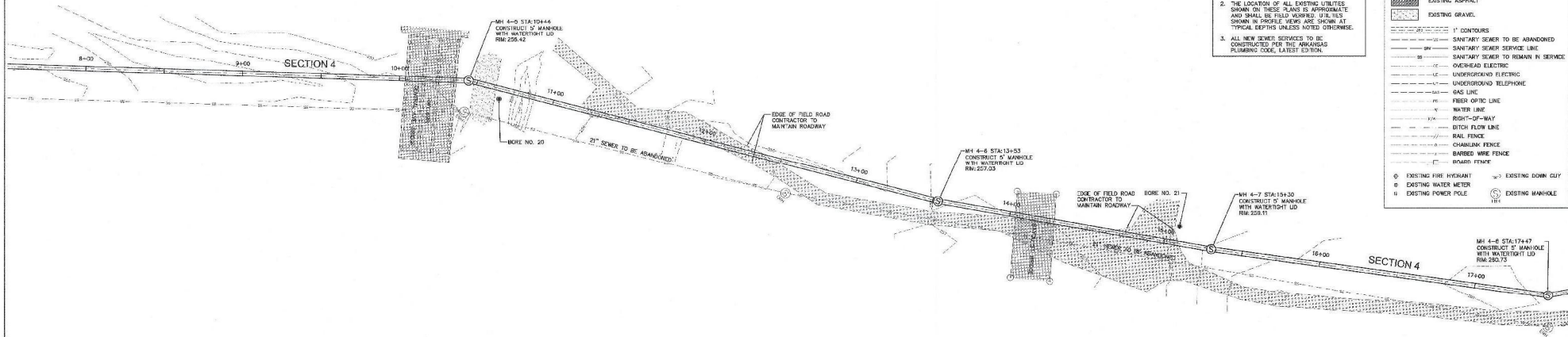
STRUCTURE NO.  
SHEET NO.  
**C4-1**



- GENERAL CONSTRUCTION NOTES**
- CAUTION IN ALL AREAS OF OVERHEAD POWER LINES. ALL OVERHEAD POWER LINES MAY NOT BE SHOWN ON THESE PLANS.
  - THE LOCATION OF ALL EXISTING UTILITIES SHOWN ON THESE PLANS IS APPROXIMATE AND SHALL BE FIELD VERIFIED. USE THIS SHOWN IN PROFILE VIEWS ARE SHOWN AT TYPICAL DEPTHS UNLESS NOTED OTHERWISE.
  - ALL NEW SEWER SERVICES TO BE CONSTRUCTED PER THE ARKANSAS PLUMBING CODE, LATEST EDITION.

**LEGEND**

|  |                                     |  |                                     |
|--|-------------------------------------|--|-------------------------------------|
|  | EXISTING CONCRETE                   |  | SAINTARY SEWER TO BE ABANDONED      |
|  | EXISTING ASPHALT                    |  | SAINTARY SEWER TO REMAIN IN SERVICE |
|  | EXISTING GRAVEL                     |  | OVERHEAD ELECTRIC                   |
|  | 1' CONTOURS                         |  | UNDERGROUND ELECTRIC                |
|  | SAINTARY SEWER SERVICE LINE         |  | UNDERGROUND TELEPHONE               |
|  | SAINTARY SEWER TO REMAIN IN SERVICE |  | GAS LINE                            |
|  | OVERHEAD ELECTRIC                   |  | FIBER OPTIC LINE                    |
|  | UNDERGROUND ELECTRIC                |  | WATER LINE                          |
|  | UNDERGROUND TELEPHONE               |  | RIGHT-OF-WAY                        |
|  | GAS LINE                            |  | DITCH FLOW LINE                     |
|  | FIBER OPTIC LINE                    |  | RAIL FENCE                          |
|  | WATER LINE                          |  | CHANNELING FENCE                    |
|  | RIGHT-OF-WAY                        |  | BARBED WIRE FENCE                   |
|  | DITCH FLOW LINE                     |  | BOARD FENCE                         |
|  | RAIL FENCE                          |  | EXISTING DOWN CUT                   |
|  | CHANNELING FENCE                    |  | EXISTING WATER METER                |
|  | BARBED WIRE FENCE                   |  | EXISTING POWER POLE                 |
|  | BOARD FENCE                         |  | EXISTING MANHOLE                    |



SECTION 4 - PROFILE  
HORIZ. 1"=30' VERT. 1"=10'

THE LOCATIONS OF EXISTING UNDERGROUND UTILITIES SHOWN ARE APPROXIMATE BASED ON THE BEST INFORMATION AVAILABLE AND MAY NOT REFLECT ALL EXISTING UTILITIES IN THE PROJECT AREA. THE CONTRACTOR IS RESPONSIBLE FOR COORDINATING WITH THE UTILITY COMPANIES FOR LOCATING EXISTING UTILITIES PRIOR TO CONSTRUCTION AND FOR PROTECTION OF SERVICES DURING CONSTRUCTION.



| REV | DATE | BY | DESCRIPTION |
|-----|------|----|-------------|
|     |      |    |             |



EXAMINED  
CBO

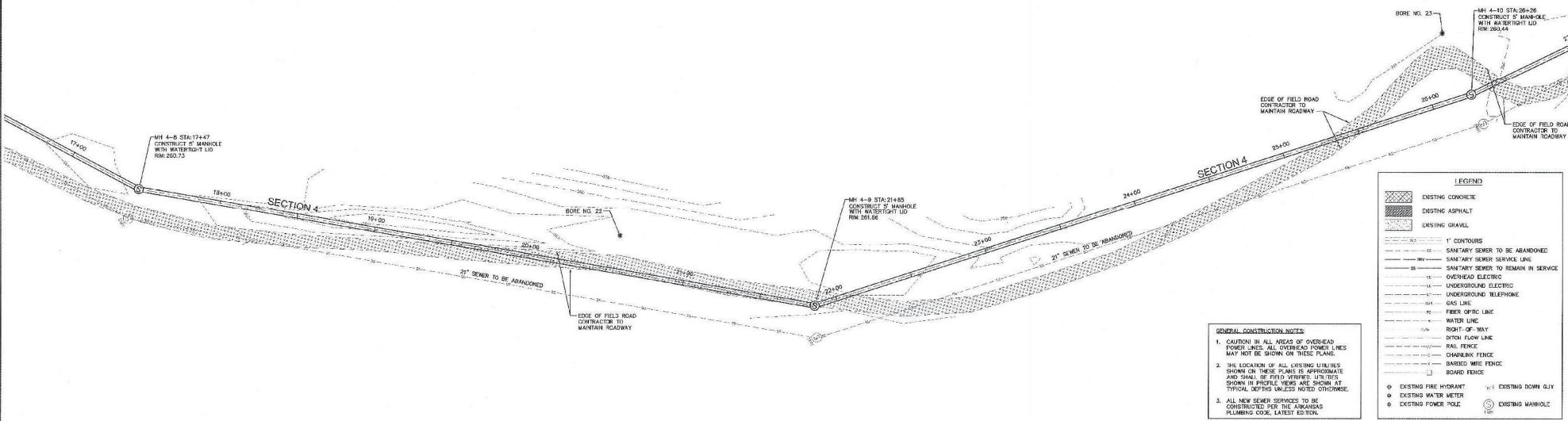
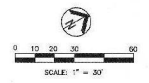
DRAWN  
ELH

DATE  
10

PLANS NO.  
BA138CS3



|   |                   |
|---|-------------------|
| WASTEWATER TREATMENT FACILITY MODIFICATIONS AND IMPROVEMENTS<br>CONTRACT SECTION 3 - PRIMARY INTERCEPTOR SEWER IMPROVEMENTS<br>BATESVILLE, ARKANSAS | STRUCTURE NO.<br> |
| SANITARY SEWER<br>SECTION 4<br>PLAN AND PROFILE   | SHEET NO.<br>C4-2 |

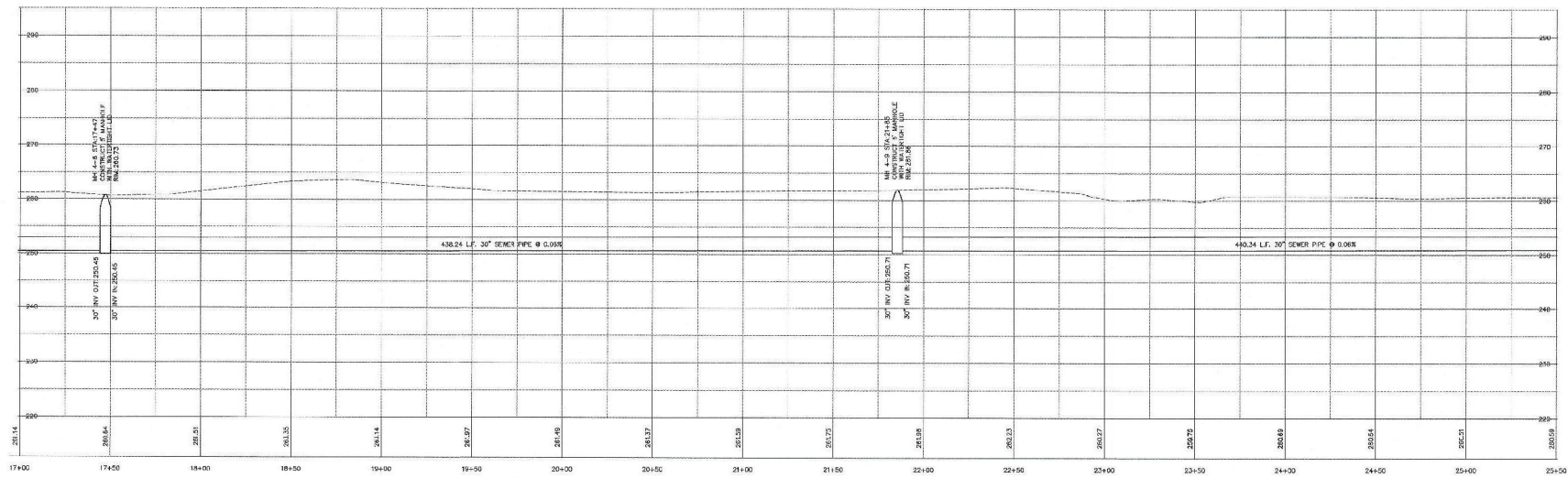


**GENERAL CONSTRUCTION NOTES**

1. CAUTION IN ALL AREAS OF OVERHEAD POWER LINES. ALL OVERHEAD POWER LINES MAY NOT BE SHOWN ON THESE PLANS.
2. THE LOCATION OF ALL EXISTING UTILITIES SHOWN ON THESE PLANS IS APPROXIMATE AND SHALL BE FIELD VERIFIED. UTILITIES SHOWN IN PROFILE VIEWS ARE SHOWN AT TYPICAL SPACING UNLESS NOTED OTHERWISE.
3. ALL NEW SEWER SERVICES TO BE CONSTRUCTED PER THE ARKANSAS PLUMBING CODE, LATEST EDITION.

**LEGEND**

|  |                                     |
|--|-------------------------------------|
|  | EXISTING CONCRETE                   |
|  | EXISTING ASPHALT                    |
|  | EXISTING GRAVEL                     |
|  | 1' CONTOURS                         |
|  | SANITARY SEWER TO BE ABANDONED      |
|  | SANITARY SEWER TO REMAIN IN SERVICE |
|  | OVERHEAD ELECTRIC                   |
|  | UNDERGROUND ELECTRIC                |
|  | UNDERGROUND TELEPHONE               |
|  | GAS LINE                            |
|  | FIBER OPTIC LINE                    |
|  | WATER LINE                          |
|  | RIGHT-OF-WAY                        |
|  | STORM FLOW LINE                     |
|  | RAIL FENCE                          |
|  | CHAINLINK FENCE                     |
|  | BARBED WIRE FENCE                   |
|  | BOARD FENCE                         |
|  | EXISTING FIRE HYDRANT               |
|  | EXISTING WATER METER                |
|  | EXISTING POWER POLE                 |
|  | EXISTING DOWN GULLY                 |
|  | EXISTING MANHOLE                    |



**SECTION 4 - PROFILE**  
HORIZ: 1"=30' VERT: 1"=10'

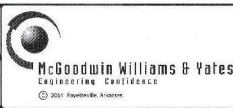
THE LOCATIONS OF EXISTING UNDERGROUND UTILITIES SHOWN ARE APPROXIMATE AND BASED ON THE BEST INFORMATION AVAILABLE AND MAY NOT REFLECT ALL EXISTING UTILITIES IN THE PROJECT AREA. THE CONTRACTOR IS RESPONSIBLE FOR COORDINATING WITH THE UTILITY COMPANIES FOR LOCATING EXISTING UTILITIES PRIOR TO CONSTRUCTION AND FOR PROTECTION OF SERVICES DURING CONSTRUCTION.



| REV | DATE | BY | DESCRIPTION |
|-----|------|----|-------------|
|     |      |    |             |



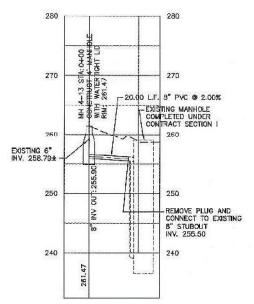
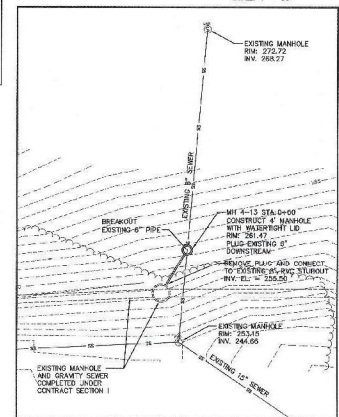
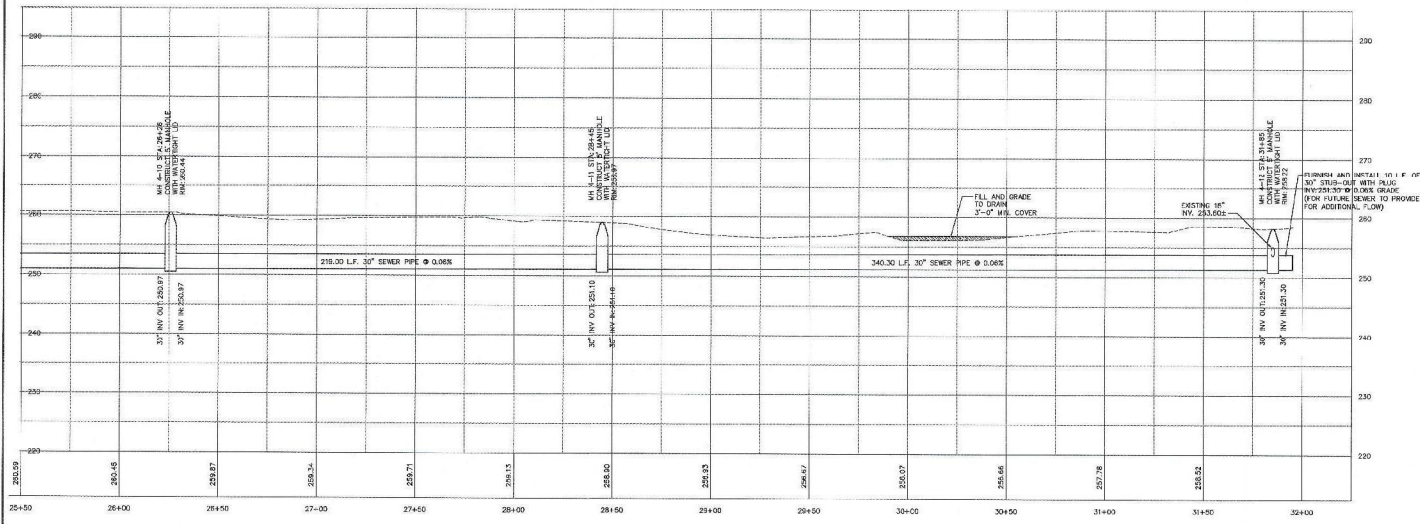
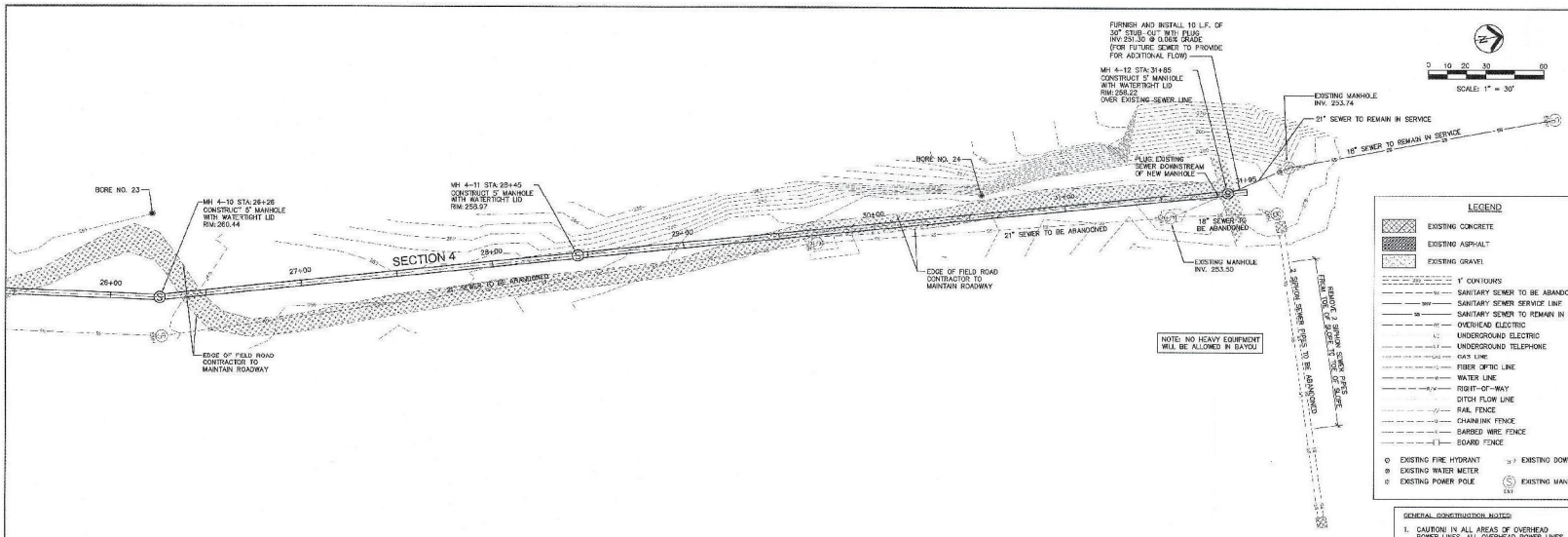
DESIGNED: CBD  
DRAWN: ELH  
CHECKED: RC  
SCALE: NO.  
**BA138CS3**



WASTEWATER TREATMENT FACILITY MODIFICATIONS AND IMPROVEMENTS  
CONTRACT SECTION 3 - PRIMARY INTERCEPTOR SEWER IMPROVEMENTS  
BATESVILLE, ARKANSAS

**SANITARY SEWER SECTION 4**  
**PLAN AND PROFILE**

SHEET NO.  
**C4-3**



THE LOCATIONS OF EXISTING UNDERGROUND UTILITIES SHOWN ARE APPROXIMATE BASED ON THE BEST INFORMATION AVAILABLE AND MAY NOT REFLECT ALL EXISTING UTILITIES IN THE PROJECT AREA. THE CONTRACTOR IS RESPONSIBLE FOR COORDINATING WITH THE UTILITY COMPANIES FOR LOCATING EXISTING UTILITIES PRIOR TO CONSTRUCTION AND FOR PROTECTION OF SERVICES DURING CONSTRUCTION.



| REV | DATE | BY | DESCRIPTION |
|-----|------|----|-------------|
|     |      |    |             |



DESIGNED: CBD  
DRAWN: ELH  
CHECKED: [Signature]  
PLANS NO: BA138CS3

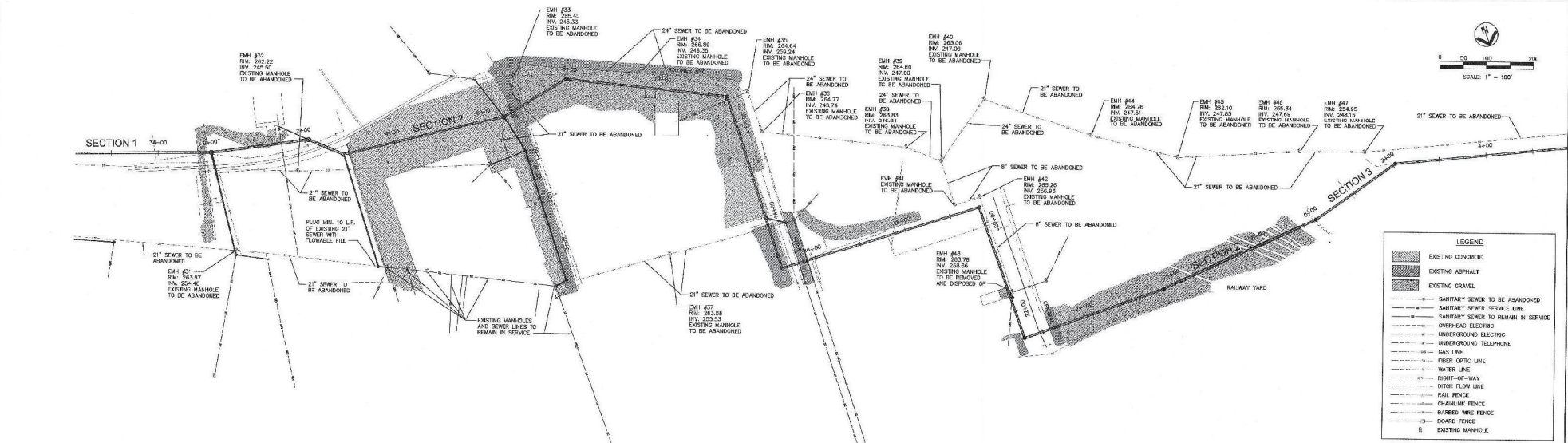
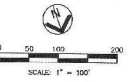
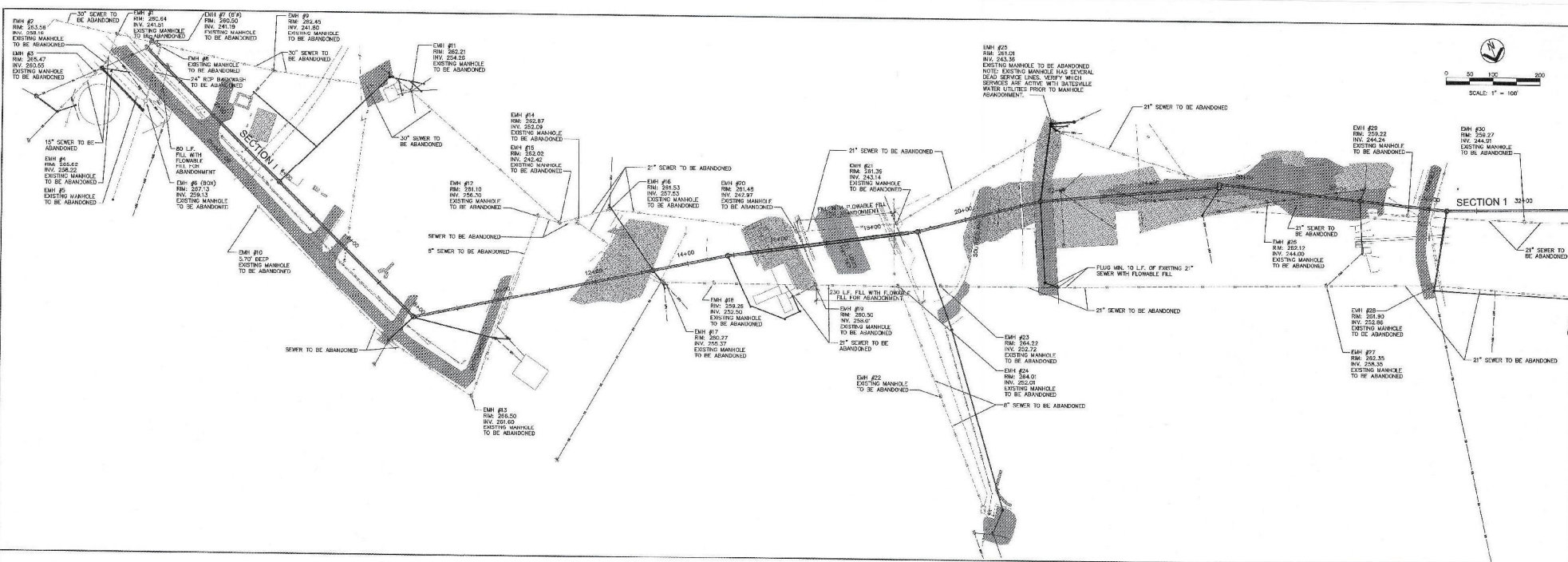
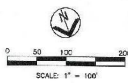


WASTEWATER TREATMENT FACILITY MODIFICATIONS AND IMPROVEMENTS  
CONTRACT SECTION 3 - PRIMARY INTERCEPTOR SEWER IMPROVEMENTS  
BATESVILLE, ARKANSAS

**SANITARY SEWER SECTION 4 AND TIE-IN 4A PLAN AND PROFILE**

PROJECT NO: C4-4



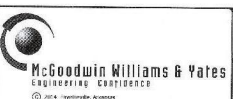


| LEGEND    |                                     |
|-----------|-------------------------------------|
| [Pattern] | EXISTING CONCRETE                   |
| [Pattern] | EXISTING ASPHALT                    |
| [Pattern] | EXISTING GRAVEL                     |
| [Pattern] | SANITARY SEWER TO BE ABANDONED      |
| [Pattern] | SANITARY SEWER SERVICE LINE         |
| [Pattern] | SANITARY SEWER TO REMAIN IN SERVICE |
| [Pattern] | OVERHEAD ELECTRIC                   |
| [Pattern] | UNDERGROUND ELECTRIC                |
| [Pattern] | UNDERGROUND TELEPHONE               |
| [Pattern] | GAS LINE                            |
| [Pattern] | FIBER OPTIC LINE                    |
| [Pattern] | WATER LINE                          |
| [Pattern] | RIGHT-OF-WAY                        |
| [Pattern] | DITCH FLOW LINE                     |
| [Pattern] | RAIL FENCE                          |
| [Pattern] | CHAINLINK FENCE                     |
| [Pattern] | BARBED WIRE FENCE                   |
| [Pattern] | BOARD FENCE                         |
| [Pattern] | B EXISTING MANHOLE                  |

|          |      |           |             |
|----------|------|-----------|-------------|
| DESIGNED | CBD  | DRAWN     | ELH         |
| CHECKED  | RC   | PLANT NO. |             |
| REV.     | DATE | BY        | DESCRIPTION |
|          |      |           |             |
|          |      |           |             |

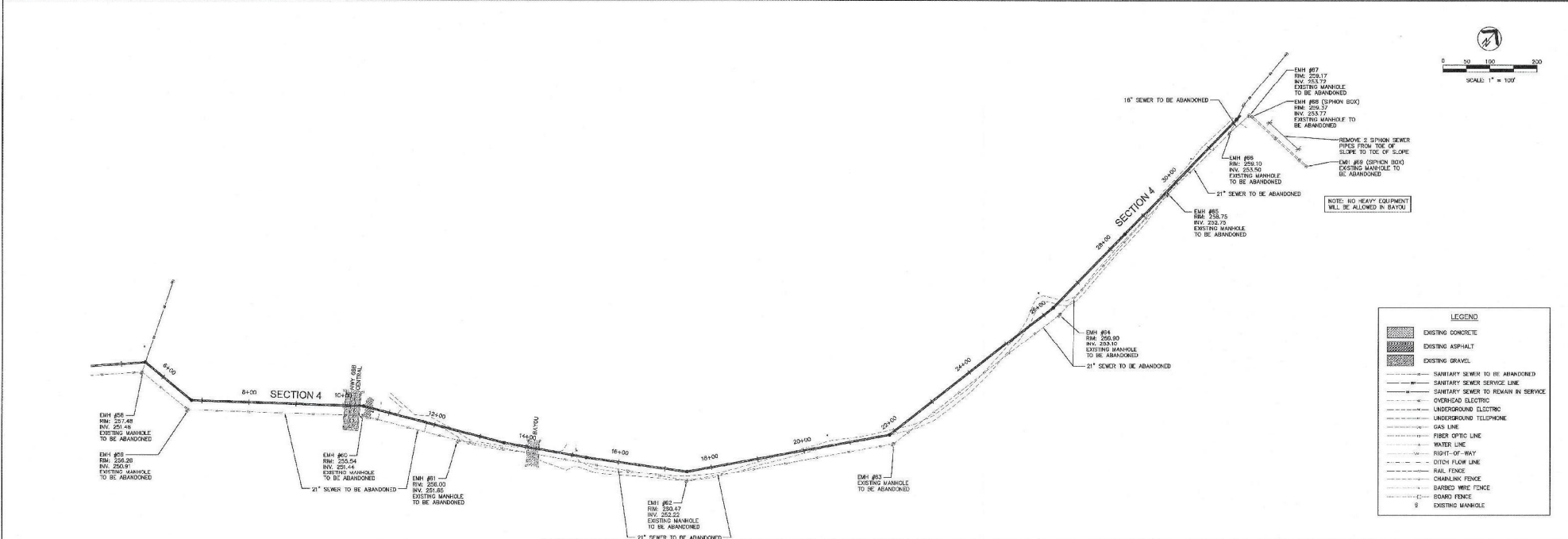
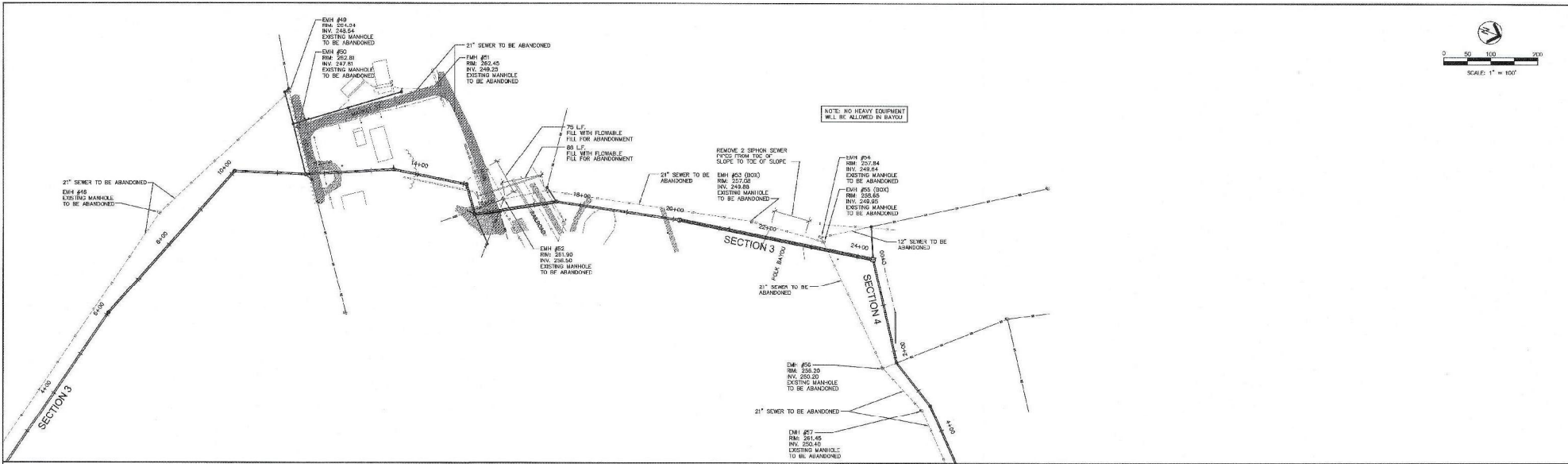


PROJECT NO.  
**BA138CS3**



|   |   |
|---|---|
| WASTEWATER TREATMENT FACILITY MODIFICATIONS AND IMPROVEMENTS<br>CONTRACT SECTION 3 - PRIMARY INTERCEPTOR SEWER IMPROVEMENTS<br>BATESVILLE, ARKANSAS | STRUCTURE NO.<br><br>SHEET NO.<br><b>C5</b> |
|---|---|

X:\BATESVILLE\PROJECTS\DWG\BA138CS3-05.dwg, CO. 3/14/2014 10:02 AM, USER: PCHAMBERS, ARCAD, C. 15



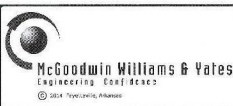
**LEGEND**

|           |                                |
|-----------|--------------------------------|
| [Pattern] | EXISTING CONCRETE              |
| [Pattern] | EXISTING ASPHALT               |
| [Pattern] | EXISTING GRAVEL                |
| [Symbol]  | SANITARY SEWER TO BE ABANDONED |
| [Symbol]  | SANITARY SEWER SERVICE LINE    |
| [Symbol]  | OVERHEAD ELECTRIC              |
| [Symbol]  | UNDERGROUND ELECTRIC           |
| [Symbol]  | UNDERGROUND TELEPHONE          |
| [Symbol]  | GAS LINE                       |
| [Symbol]  | FIBER OPTIC LINE               |
| [Symbol]  | WATER LINE                     |
| [Symbol]  | RIGHT-OF-WAY                   |
| [Symbol]  | CLON FLOOR LINE                |
| [Symbol]  | RAIL FENCE                     |
| [Symbol]  | CHARLINK FENCE                 |
| [Symbol]  | BARBED WIRE FENCE              |
| [Symbol]  | BOARD FENCE                    |
| [Symbol]  | EXISTING MANHOLE               |

| REV | DATE | BY | DESCR.FTION |
|-----|------|----|-------------|
|     |      |    |             |
|     |      |    |             |
|     |      |    |             |



DESIGNED: CBD  
 DRAWN: ELH  
 CHECKED: RC  
 PROJECT NO.: BA138CS3

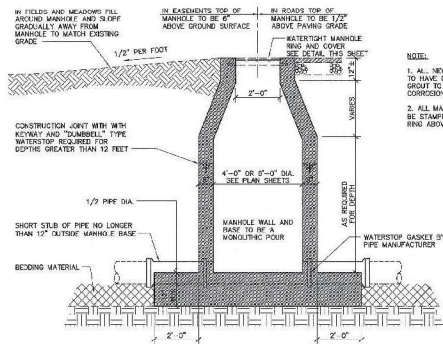


WASTEWATER TREATMENT FACILITY MODIFICATIONS AND IMPROVEMENTS  
 CONTRACT SECTION 3 - PRIMARY INTERCEPTOR SEWER IMPROVEMENTS  
 BATESVILLE, ARKANSAS

**ABANDON EXISTING  
 SANITARY SEWER  
 PLAN**

REVISION NO. \_\_\_\_\_  
 SHEET NO. **C6**

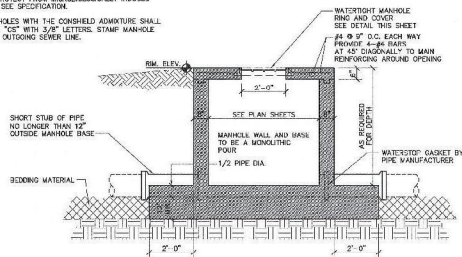
C:\Users\mwilliams\OneDrive\Documents\Projects\138CS3\138CS3.dwg, 05/11/2011 10:50:01 AM, user: pmc@mcwy.com



TYPICAL MANHOLE

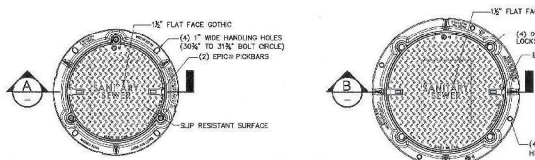
NOTE:

1. ALL NEW CAST-IN-PLACE CONCRETE SEWER STRUCTURES TO HAVE CONCREDE ADMIXTURE IN THE CONCRETE AND GROUT TO PROTECT FROM MICROBIOLOGICALLY INDUCED CORROSION. SEE SPECIFICATION.
2. ALL MANHOLES WITH THE CONCREDE ADMIXTURE SHALL BE STAMPED "CS" WITH 3/8" LETTERS. STAMP MANHOLE RING ABOVE OUTGOING SEWER LINE.

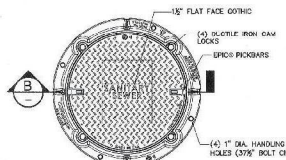


FLAT TOP MANHOLE

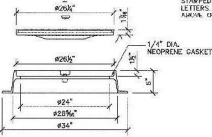
1 4' to 6' DIAMETER CAST IN PLACE MANHOLE DETAIL  
3/8" - 1'-0"



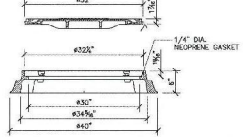
A SECTION



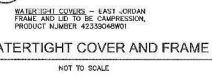
B SECTION



A SECTION



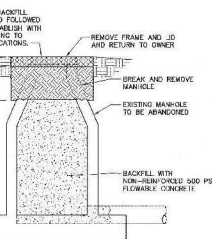
B SECTION



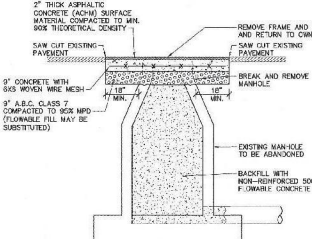
NOT TO SCALE



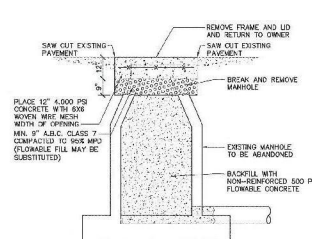
NOT TO SCALE



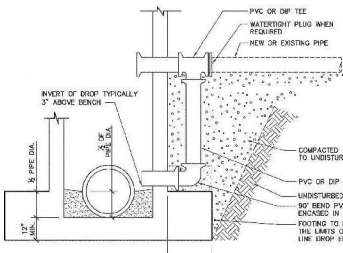
8A ABANDON EXISTING MANHOLE GRASS AREAS  
NOT TO SCALE



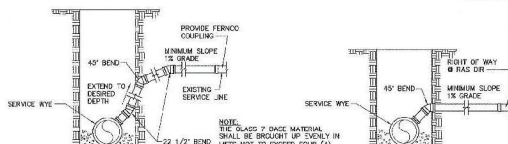
8B ABANDON EXISTING MANHOLE PAVED AREAS  
NOT TO SCALE



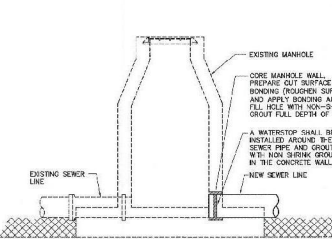
8C ABANDON EXISTING MANHOLE CONCRETE AREAS  
NOT TO SCALE



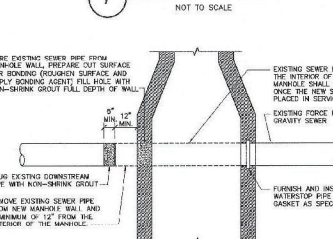
5 SEWER LINE DROP ASSEMBLY DETAIL  
3/8" - 1'-0"



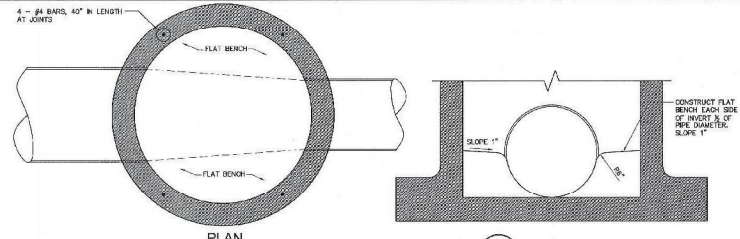
6 SEWER SERVICE CONNECTIONS  
NOT TO SCALE



9 CONNECTION TO EXISTING MANHOLE  
NOT TO SCALE

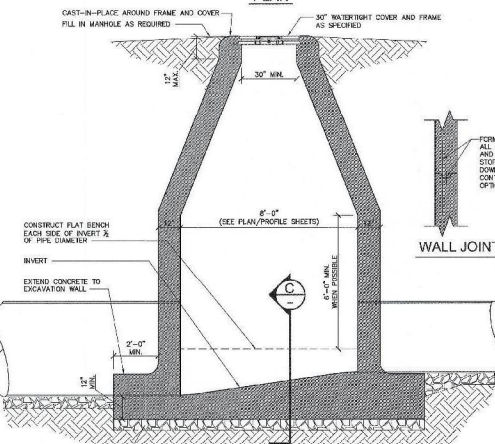


10 TIE IN OF EXISTING SEWER LINES  
NOT TO SCALE



PLAN

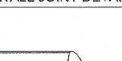
C SECTION



2 8' DIAMETER CAST IN PLACE MANHOLE DETAIL  
3/8" - 1'-0"

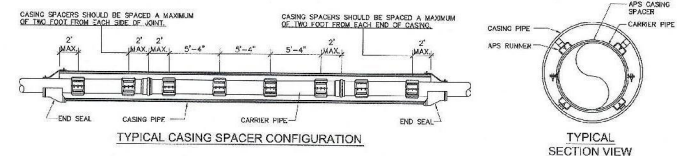
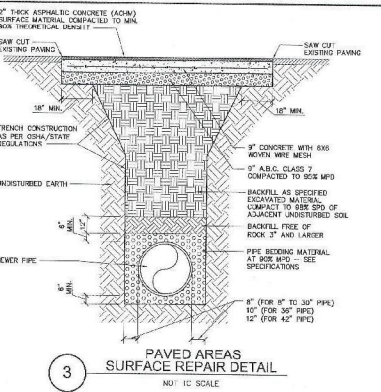
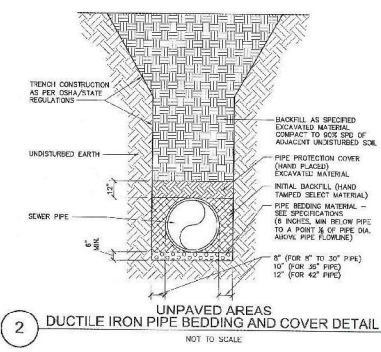
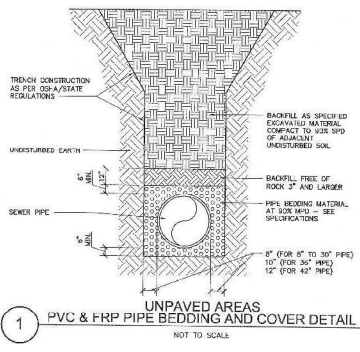
- NOTE:
1. ALL MANHOLES ARE IN A FLUID CURING AREA.
  2. CONTRACTOR SHALL PROVIDE ANTI-FLUTATION PROTECTION OF THE PIPE AND MANHOLE DURING AND AFTER PLACEMENT OF CONCRETE.
  3. DOWEL BARS SHALL BE INSTALLED AT JOINTS.
  4. WATER STOP SHALL BE INSTALLED ON EACH PIPE CAST IN THE MANHOLE WALL AND PROVIDE STRUCTURAL SOUND AND WATER TIGHT INSTALLATION.
  5. THE WATER TIGHT RING AND LID SHALL CAST IN CONCRETE AND PROVIDE STRUCTURAL SOUND AND WATER TIGHT INSTALLATION.
  6. TREMIE SHALL BE USED WHERE DISCHARGE SHOOT IS GREATER THAN 6' ABOVE CONCRETE PLACEMENT.
  7. ALL NEW CAST-IN-PLACE CONCRETE SEWER STRUCTURES TO HAVE CONCREDE ADMIXTURE IN THE CONCRETE AND GROUT TO PROTECT FROM MICROBIOLOGICALLY INDUCED CORROSION. SEE SPECIFICATION.
  8. ALL MANHOLES WITH THE CONCREDE ADMIXTURE SHALL BE STAMPED "CS" WITH 3/8" LETTERS. STAMP MANHOLE RING ABOVE OUTGOING SEWER LINE.

WALL JOINT DETAIL



7 CLEANOUT DETAIL  
NOT TO SCALE

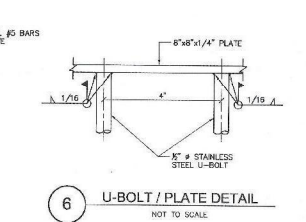
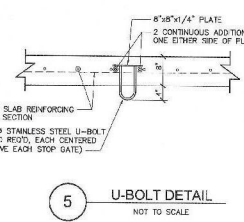
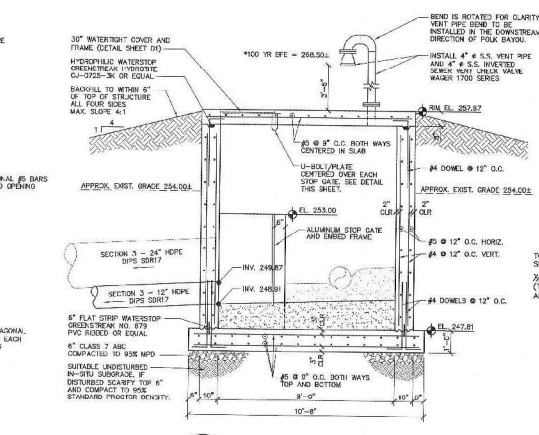
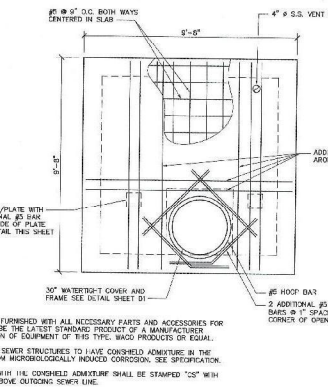
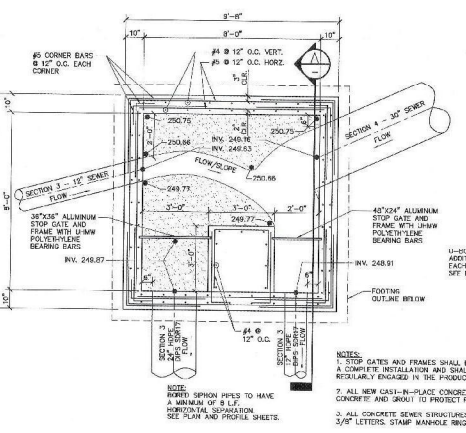
|                         |  |  |  |  |  |   |                               |
|-------------------------|--|--|--|--|--|---|-------------------------------|
| REV DATE BY DESCRIPTION |  |  |  | ISSUED: CBD<br>DRAWN: FLH<br>CHECKED: RJC<br>PLANS NO.: BA138CS3 |  | WASTEWATER TREATMENT FACILITY MODIFICATIONS AND IMPROVEMENTS<br>CONTRACT SECTION 3 - PRIMARY INTERCEPTOR SEWER IMPROVEMENTS<br>BATESVILLE, ARKANSAS | STRUCTURE NO.<br>SHEET NO. D1 |
|-------------------------|--|--|--|--|--|---|-------------------------------|



**ENCASUREMENT / CARRIER PIPE SIZING CHART**

| Min. Spacing | Min. Spacing | Min. Spacing | Min. Spacing |
|--------------|--------------|--------------|--------------|
| 4"           | 4.50         | 5.50         | 10.75        |
| 6"           | 6.63         | 8.00         | 12"          |
| 8"           | 8.63         | 10.25        | 15"          |
| 10"          | 10.75        | 13.00        | 20"          |
| 12"          | 12.75        | 15.25        | 24"          |
| 16"          | 16.00        | 18.75        | 24"          |
| 18"          | 18.00        | 21.25        | 30"          |
| 24"          | 24.00        | 28.00        | 36"          |
| 30" C/D      | 30.00        | 35.61        | 48"          |
| 36" C/D      | 36.30        | 42.82        | 54"          |
| 42" C/D      | 44.80        | 48.60        | 60"          |
| 48" C/D      | 50.00        | 55.92        | 60"          |

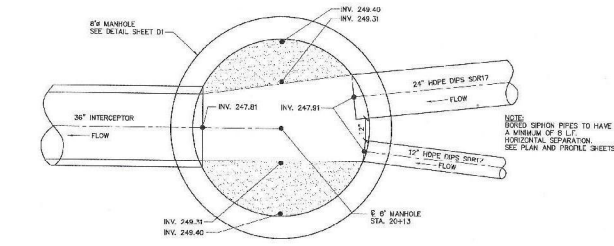
- NOTES:**
- SPACERS SHALL BE MANUFACTURED BY "ADVANCE PRODUCTS & SYSTEMS" AS SPECIFIED.
  - QUANTITY OF RUNNERS SHALL BE IN ACCORDANCE WITH CARRIER PIPE SIZE AS FOLLOWS:  
16" TO 36" DIAMETER - 8 RUNNERS  
36" TO 48" DIAMETER - 8 RUNNERS
  - A MINIMUM OF THREE SPACERS PER FULL JOINT OF PIPE.
  - WATER LINES SHALL BE "CASED" IN CASING.
  - SEWER LINES SHALL BE REEDED TO SPECIFIED SLOPE AND RESTRAINED.
  - ALL JOINT CARRIER PIPE MUST HAVE FELD LOCK GASKETS INSTALLED WITHIN THE CASING PIPE.
  - ENCASUREMENT PIPE SHALL BE NEW AND HAVE A MINIMUM WALL THICKNESS OF 0.465"



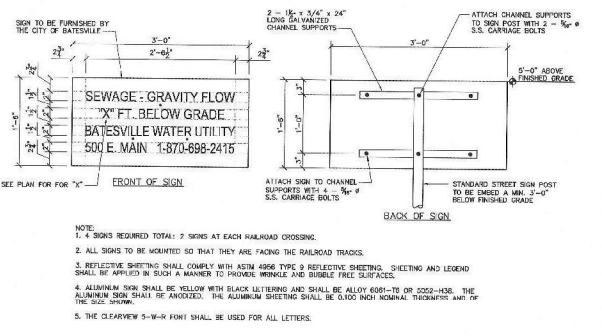
PLAN - SIPHON BOX  
3/8" = 1'-0"

PLAN - SIPHON BOX ROOF REINFORCING  
3/8" = 1'-0"

SECTION - SIPHON BOX  
3/8" = 1'-0"



PLAN - MANHOLE 3-9  
3/8" = 1'-0"



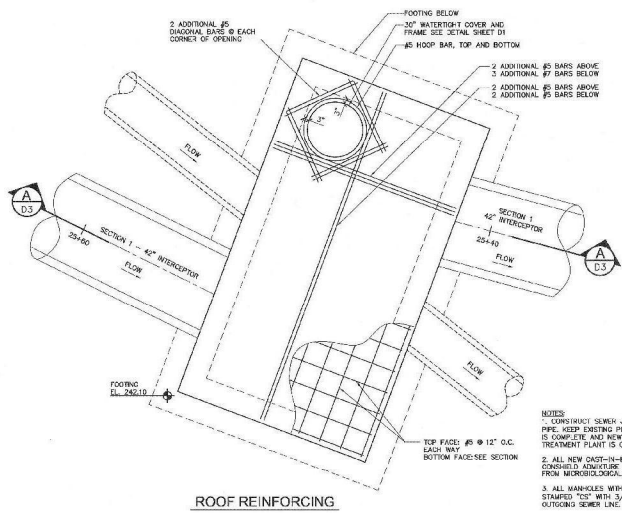
- NOTE:**
- 4 SIGNS REQUIRED TOTAL: 2 SIGNS AT EACH RAILROAD CROSSING.
  - ALL SIGNS TO BE MOUNTED SO THAT THEY ARE FACING THE RAILROAD TRACKS.
  - REFLECTIVE SHEETING SHALL COMPLY WITH ASTM A956 TYPE 9 REFLECTIVE SHEETING. SHEETING AND LEGEND SHALL BE APPLIED IN SUCH A MANNER TO PROVIDE MAXIMUM VISIBLE REFLECTANCE.
  - ALUMINUM SIGN SHALL BE YELLOW WITH BLACK LETTERING AND SHALL BE ALLOY 6061-T6 OR 3003-H36. THE ALUMINUM SIGN SHALL BE ANODIZED. THE ALUMINUM SHEETING SHALL BE 0.003 INCH THICKNESS AND 92% MIN. SHEAR STRENGTH.
  - THE CLEARVIEW 5-1/4" FONT SHALL BE USED FOR ALL LETTERS.

SEWER LOCATION SIGN DETAIL  
1" = 1'-0"

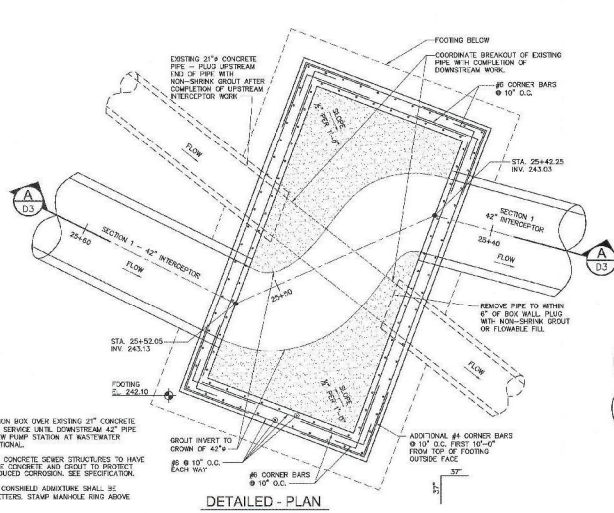
|     |      |    |             |                 |              |               |                       |
|-----|------|----|-------------|-----------------|--------------|---------------|-----------------------|
| REV | DATE | BY | DESCRIPTION | DESIGNED<br>CBD | DRAWN<br>ELH | CHECKED<br>RC | PLANE NO.<br>BA138CS3 |
|-----|------|----|-------------|-----------------|--------------|---------------|-----------------------|



|   |                 |
|---|-----------------|
| WASTEWATER TREATMENT FACILITY MODIFICATIONS AND IMPROVEMENTS<br>CONTRACT SECTION 3 - PRIMARY INTERCEPTOR SEWER IMPROVEMENTS<br>BATESVILLE, ARKANSAS | STRUCTURE NO.   |
| SANITARY SEWER<br>DETAILS   | SHEET NO.<br>D2 |



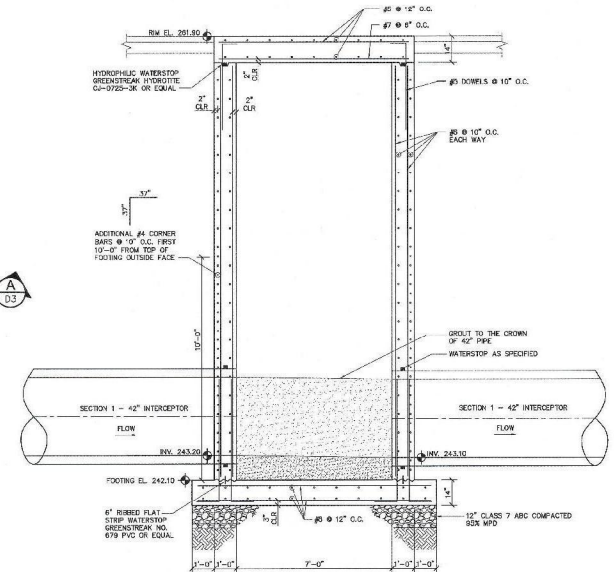
**ROOF REINFORCING**



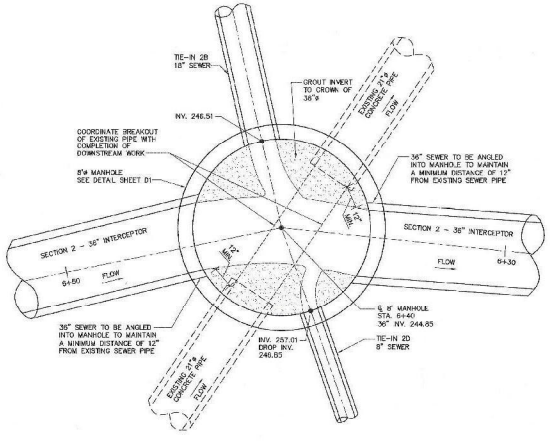
**DETAILED - PLAN**

- NOTES**
- CONSTRUCT SEWER JUNCTION BOX OVER EXISTING 21" CONCRETE PIPE. KEEP EXISTING PIPE IN SERVICE UNTIL DOWNSTREAM 42" PIPE IS COMPLETE AND NEW SEWER PUMP STATION AT WASTEWATER TREATMENT PLANT IS OPERATIONAL.
  - ALL NEW CAST-IN-PLACE CONCRETE SEWER STRUCTURES TO HAVE CONSOLE KNOWLEDGE IN THE CONCRETE AND RESULT TO PROTECT FROM MICROBIOLOGICALLY INDUCED CORROSION. SEE SPECIFICATION.
  - ALL MANHOLES WITH THE CONSOLE ADDITIVE SHALL BE STAMPED "15" WITH 3/8" LETTERS. STAMP MANHOLE RING ABOVE OUTGOING SEWER LINE.

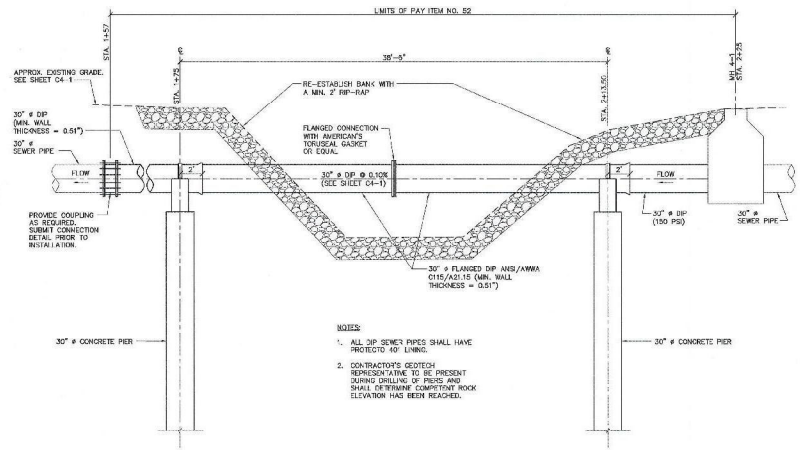
SEE SHEET C1-0 FOR PLAN AND PROFILE OF SECTION 1 - 42" INTERCEPTOR  
**1 SEWER JUNCTION BOX**  
 3/8" = 1'-0"



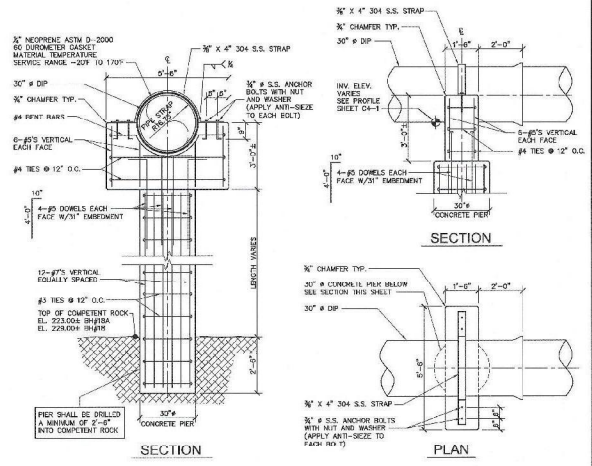
**SECTION A - SEWER JUNCTION BOX**  
 3/8" = 1'-0"



SEE SHEET C2-1 FOR PLAN AND PROFILE OF SECTION 2 - 36" INTERCEPTOR SEWER  
**2 DETAIL - PLAN MANHOLE 2-3**  
 3/8" = 1'-0"



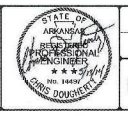
**3 CONCRETE PIER ELEVATION**  
 3/16" = 1'-0"



**4 CONCRETE PIER DETAILS**  
 3/8" = 1'-0"

- NOTES**
- ALL 30" SEWER PIPES SHALL HAVE PROTECTED 40' LINING.
  - CONTRACTOR'S GEOTECH REPRESENTATIVE TO BE PRESENT DURING DRILLING OF PIERS AND SHALL DETERMINE COMPETENT ROCK ELEVATION HAS BEEN RECORDED.

|                          |                       |
|--------------------------|-----------------------|
| DESIGNED<br>CBD          | DRAWN<br>ELH          |
| CHECKED<br>RC            | PLANS NO.<br>BA138CS3 |
| REV. DATE BY DESCRIPTION |                       |



McGoodwin Williams & Bates  
 ENGINEERING CONSULTANTS  
 2024 - 2025

|   |                 |
|---|-----------------|
| WASTEWATER TREATMENT FACILITY MODIFICATIONS AND IMPROVEMENTS<br>CONTRACT SECTION 3 - PRIMARY INTERCEPTOR FOR SEWER IMPROVEMENTS<br>BATESVILLE, ARKANSAS | STRUCTURE NO.   |
| <b>SANITARY SEWER DETAILS</b>   | SHEET NO.<br>D3 |